

Illicit Discharge Detection and Elimination: State/Local Partnerships

Part 1: NEIWPCCC's IDDE Manual

**Rebekah Lacey
NEIWPCCC
November 2003**



New England Interstate Water Pollution Control Commission (NEIWPCC)

- 💧 Created in 1947 by an Act of Congress
- 💧 CT, ME, MA, NH, NY, RI, and VT
- 💧 35 Commissioners (5 per State)
- 💧 Headquartered in Lowell, MA
- 💧 Web site at www.neiwpcc.org

EPA Regulation of Stormwater Discharges

💧 Phase I (1990)

- 💧 Large and medium MS4s
- 💧 Industrial activities
- 💧 Large construction sites

💧 Phase II (1999)

- 💧 Small MS4s in urbanized areas
- 💧 Small construction sites
- 💧 End of municipal exemption for industrial activities
- 💧 Revision of “No Exposure” provision

NEIWPCC's Stormwater Workgroup



- 💧 **Meets 3 times a year**
- 💧 **State and EPA staff**
- 💧 **Discusses implementation of EPA's Phase II Stormwater Rule**

Phase II and Small MS4s: 6 Minimum Measures

- 💧 Public education and outreach
- 💧 Public participation/involvement
- 💧 Illicit discharge detection and elimination (IDDE)
- 💧 Construction site runoff control
- 💧 Post-construction runoff control
- 💧 Pollution prevention

Phase II and Small MS4s: 6 Minimum Measures

- 💧 Public education and outreach
- 💧 Public participation/involvement
- 💧 Illicit discharge detection and elimination (IDDE)
- 💧 Construction site runoff control
- 💧 Post-construction runoff control
- 💧 Pollution prevention

Illicit Discharge: Definition

“Any discharge to a municipal separate storm sewer that is not composed entirely of stormwater, except discharges pursuant to an NPDES permit and discharges resulting from fire-fighting activities.”

Examples of Illicit Discharges

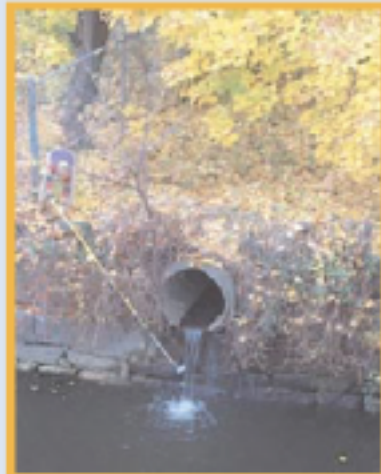
- Sewage line from a house or business is connected to storm drainage system
- Cross-connection between sewer line and storm system
- Improper disposal of auto and household toxics
- Laundry or car wash discharge flows to storm drain

Requirements for Municipalities' IDDE Programs

- 💧 Storm sewer map
- 💧 Illicit discharge ordinance
- 💧 Development and implementation of a plan to detect and address illicit discharges
- 💧 Public outreach

ILLICIT DISCHARGE DETECTION AND ELIMINATION MANUAL

A Handbook for Municipalities



NEW ENGLAND INTERSTATE WATER POLLUTION CONTROL COMMISSION

January 2003

IDDE Manual Contents

- 1. Getting Started With Your IDDE Program**
- 2. Developing a Storm Sewer Map**
- 3. Prohibiting Illicit Discharges**
- 4-7. Developing and Implementing an IDDE Plan**
 4. Locating Priority Areas
 5. Tracing the Source of an Illicit Discharge
 6. Removing the Source of an Illicit Discharge
 7. Evaluation of the IDDE Program

IDDE Manual Contents (Cont'd)

- 8. Outreach to Employees, Businesses,
and the General Public**
- 9. BMPs and Measurable Goals for IDDE**
- 10. Resources**



The IDDE manual can be downloaded from the “Publications” page of

www.neiwpc.org