

PRESUMPCOT RIVER WATERSHED LAND CONSERVATION PRIORITY PLANNING

State of the Bay Conference, October 21, 2010

Matt Craig

Technical Program Coordinator, Casco Bay Estuary Partnership





Outline

Background
Project Overview
Work to Date
Lessons Learned



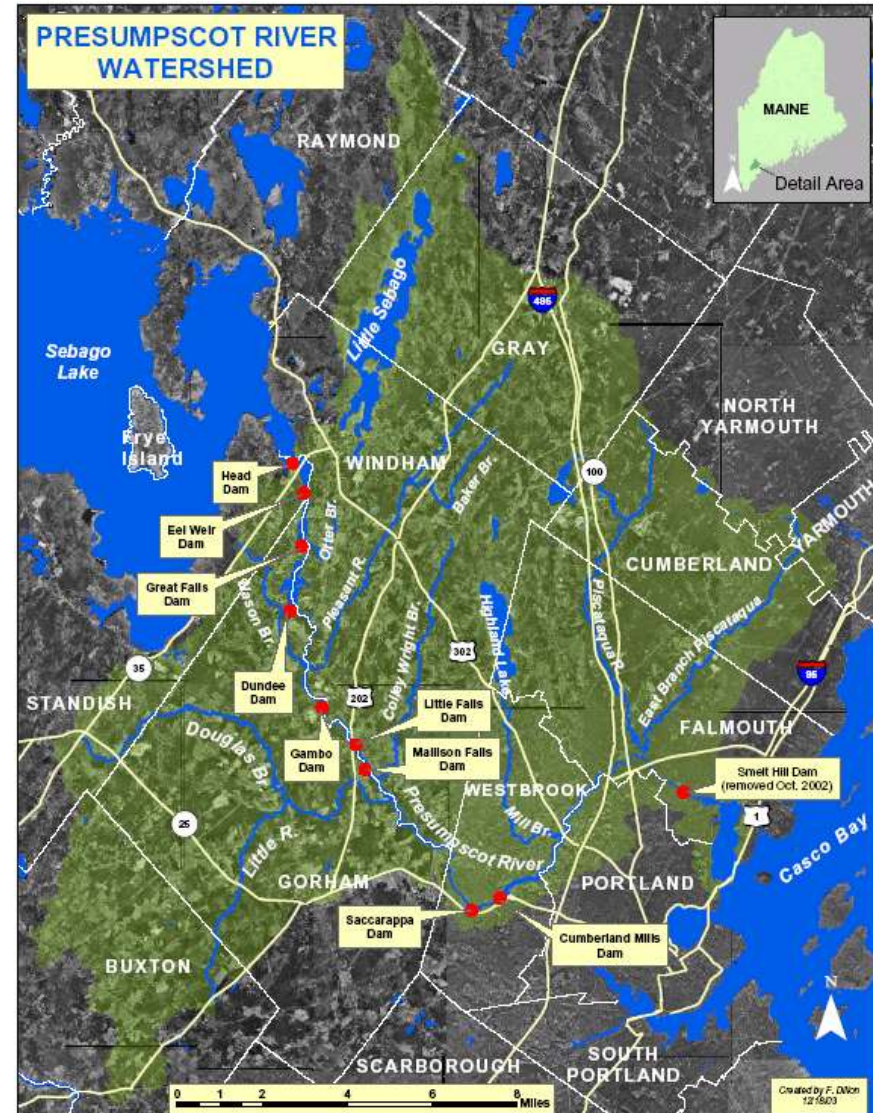


Background



Lower Presumpscot Watershed

- Downstream of Sebago
- 205 square miles
- 27 miles long
- 12 municipalities
- Late 90's – pulp mill discharges cease
- 2002 – Smelt Hill Dam removed
- 2011 & Beyond – Fish passage upstream



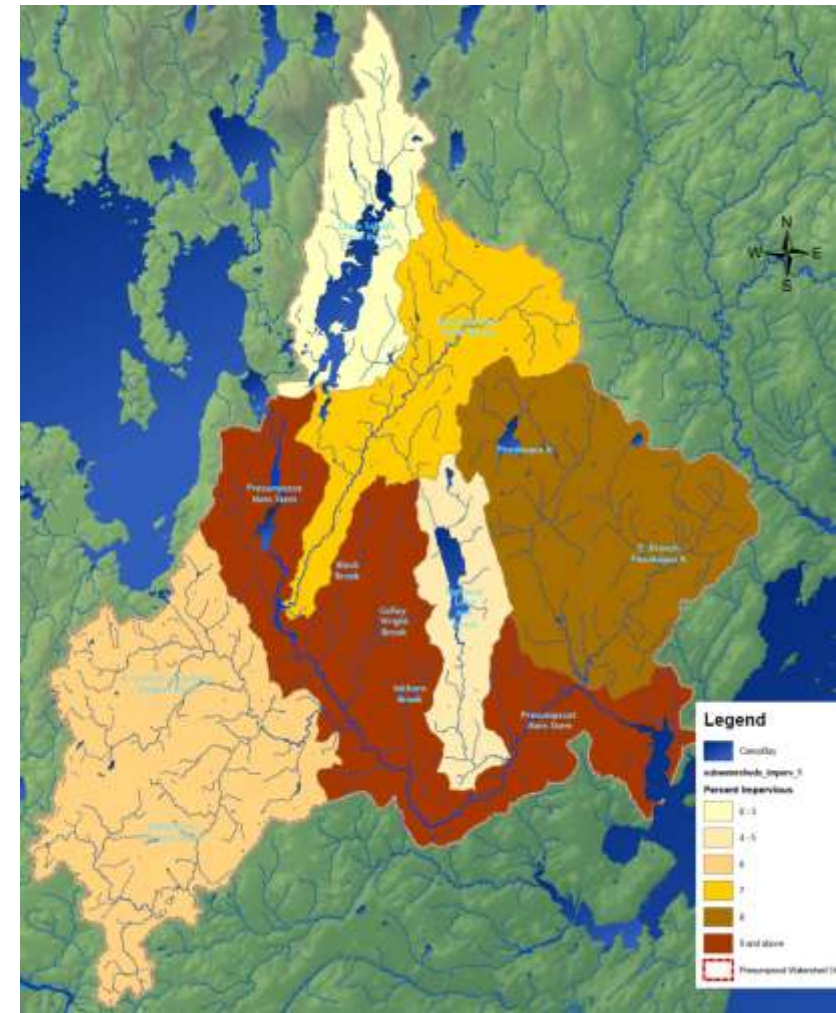
Impervious Surfaces

Percent total acreage of the watershed

(2004 impervious data, based on 1999 Land Sat imagery)

- **7.4% impervious surface** (9,693 acres)
- At 10%, detrimental impacts

Sub Watershed	% Impervious
Black Brook	8.9
Colley Wright Brook	8.0
E. Branch Piscataqua R.	7.5
Highland Lk/Mill Bk	4.6
Inkhorn Brook	3.9
Little R./Tannery Br.	6.3
Little Sebago/Ditch Br.	4.4
N. Branch Little/Douglas	5.8
Piscataqua River	7.6
Pleasant R./Baker Br.	6.5
Presumpscot Main Stem	12.3



Conserved/Open Space Lands

Percent total acreage of the watershed

(by USFWS Conserved Category, 2010)

Conservation Land – Permanent	2.6%
Conservation Land – Not Permanent	0.4%
Unofficial Conservation Land	0.2%
Active Recreational Lands	0.9%
<u>Other Public Land</u>	1.2%
TOTAL	5.5%



Related Efforts

- Municipal open space & comprehensive plans
- Regional comprehensive plan
- Gorham East/West corridor
- Portland North Land Trust Collaborative
- Lakes Region Greenprint
- Beginning With Habitat



Need

- Protecting water quality & aquatic habitat requires watershed approach
- Recent water quality improvements; sea run fish restoration
- Proactive conservation through prioritization
- Communication & coordination in pursuit of limited funds
- Crossing institutional boundaries
- Conservation supported by multiple constituencies
- Dialogue up & downstream

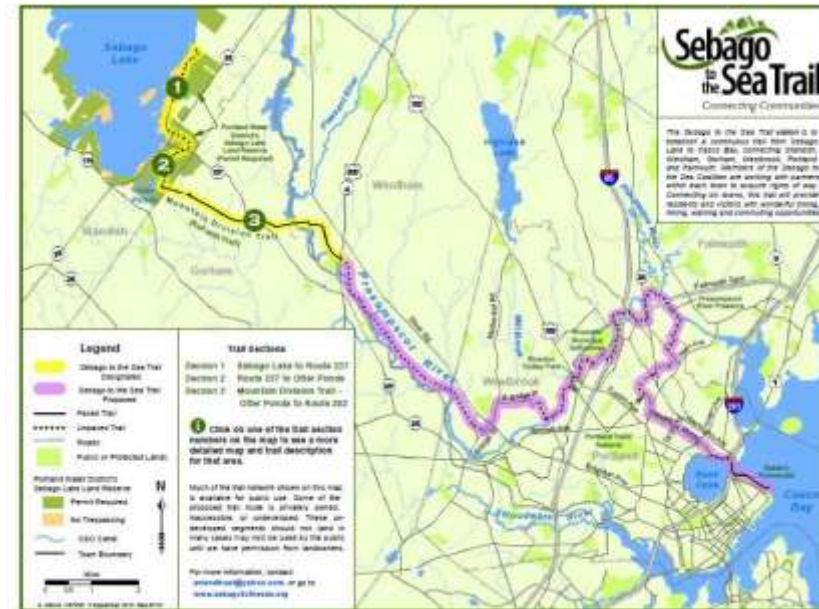


Ray Monahan



Opportunities

- Protect an undeveloped watershed close to urban areas
- Builds on existing collaborations (S2S, PNLTC, etc.); fisheries restoration
- Find synergy, efficiencies
- Strengthen fund raising
- Policy influence – unified voice
- Transferable model
- Incorporation into plans and protection efforts
- Bring unusual voices to the table





Project Overview



Origins

2004: *Presumpscot Plan*

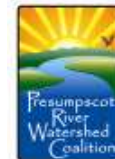
- ▣ Corridor-focused
- ▣ Calls for refined prioritization of land conservation

December 2008: identified as a PRWC focus for 2009

February 2009: PRWC kickoff meeting

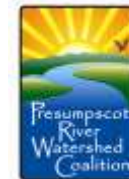
June 2009 –CBEP/PRWC proposal to Environmental Funders Network

August 2009 – \$35,000 EFN grant



Goals

- Establish shared land conservation vision, values & priorities for the lower Presumpscot River watershed
- Develop a transferable collaborative model



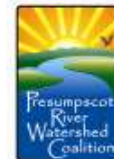
Organizational Structure (proposed)

Stakeholder Committee

- ❑ Comprised of representatives of organizations and parties interested in land conservation in the Presumpscot watershed
- ❑ Decision making body for process and content of the project
- ❑ Meets at least once per quarter. Additional meetings as necessary
- ❑ Nominal 'Chair' to facilitate

Steering Committee

- ❑ Subcommittee of the Stakeholder Committee
- ❑ Tasked with project management tasks by the Stakeholder Committee. Tasks include background research, organizing public involvement, report drafting, and grant management.
- ❑ Meets at least once per month with additional meetings as necessary



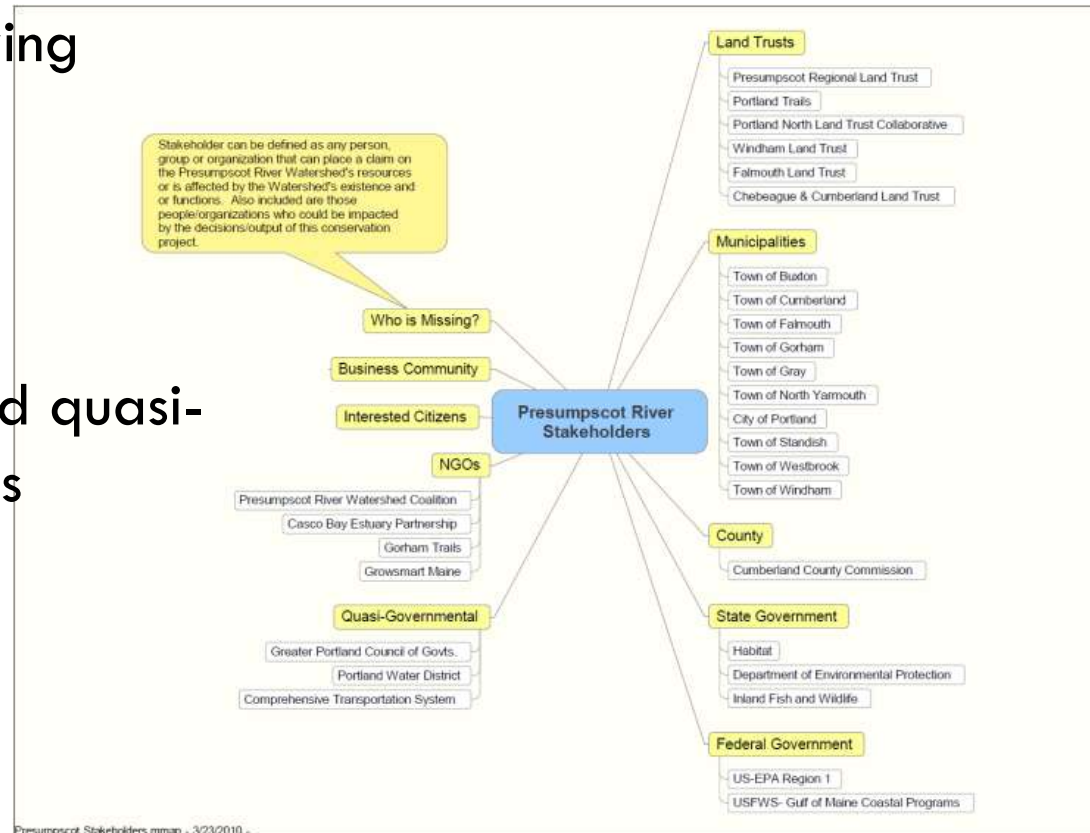
Steering Committee

- Brooks More, Town of Windham
- Janet Yancey, Portland Trails
- Jessica Burton, Portland North Land Trust Collaborative
- Matt Craig, Casco Bay Estuary Partnership
- Molly Casto, City of Portland
- Rebecca Schaffner, Greater Portland Council of Governments
- Richard Curtis, Presumpscot Regional Land Trust
- Will Plumley, Presumpscot River Watershed Coalition
- Services:
 - GIS analysis - Stephen Engle, Center for Community GIS
 - Facilitation - Paul Mentag, Institute for Civic Leadership



Stakeholder Committee

- Stakeholders invited following deliberative analysis
- 12 municipalities
- 6 local land trusts
- Select agencies, NGOs, and quasi-governmental organizations
- Public forums, targeting:
 - 'Unusual' voices
 - Businesses
 - Large landowners



How will vision, values & priorities be developed?

DATA



- ▣ Stakeholder meetings
- ▣ Public forums
- ▣ Available GIS data
 - Conserved lands, habitat, land use, etc.
- ▣ New GIS data
 - Trails?
 - Active farms?
 - Working forests?
- ▣ Dump n' donuts?

VALUES, PRIORITIZATION

- ▣ Stakeholders
- ▣ Public input & refinement
- ▣ Between meeting work by Steering Committee
- ▣ GIS analysis



MAPS
VISION

Products

Final report (mock up):

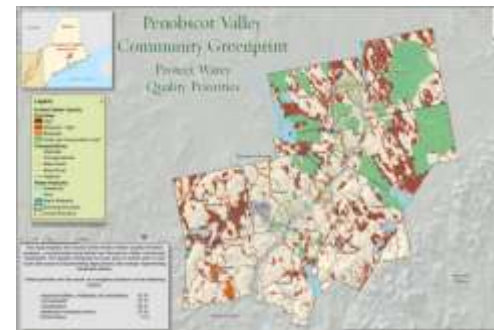
- ▣ Background
- ▣ Process
- ▣ Vision
- ▣ Values - maps
- ▣ Priorities - maps
- ▣ Recommendations
- ▣ Implementation strategies
- ▣ Lessons learned

Geodatabase:

- ▣ Data storage
- ▣ Data sharing
- ▣ Data analysis
- ▣ Data development

Examples

- Mount Agamenticus to the Sea
- Sagadahoc Region Rural Resource Initiative
- Land Conservation Plan for Maine's Piscataqua Region Watersheds
- Greenprints – Trust For Public Land

[illegible]

Work To Date



June 30th Forum - Participants

- ❑ Presumpscot Regional Land Trust
 - ❑ Portland Trails
 - ❑ Portland North Land Trust Collaborative
 - ❑ Windham Land Trust
 - ❑ Falmouth Land Trust
 - ❑ Chebeague & Cumberland Land Trust
 - ❑ Casco Bay Estuary Partnership
 - ❑ Friends of the Presumpscot River
 - ❑ Presumpscot River Watershed Coalition
 - ❑ Cumberland County Soil & Water Conservation District
 - ❑ Greater Portland Council of Governments
 - ❑ Buxton
 - ❑ Falmouth
 - ❑ Portland
 - ❑ Standish
 - ❑ Windham
 - ❑ Maine Forest Service
 - ❑ US Environmental Protection Agency
 - ❑ National Oceanic & Atmospheric Administration
 - ❑ US Fish & Wildlife Service, Gulf of Maine Coastal Program
- Consultants:**
- ❑ Center for Community GIS
 - ❑ Institute for Civic Leadership

What inspires us to conserve?

- Water quality & aquatic habitat
- Rare & threatened natural communities
- Native fish
- Recreation
- Historical significance
- Accessibility – urban areas
- Aesthetic/ethics
- ‘Basic needs’ – food, water, wood
- Development pressures
- Legacy – future generations



Which are the most important landscape elements that need to be protected?

- ❑ Water quality
- ❑ Riparian areas
- ❑ Lakes and ponds
- ❑ Wetlands
- ❑ First order streams
- ❑ Waterfalls
- ❑ Rural character
- ❑ Working farms & forests
- ❑ Open space
- ❑ Historic elements/landmarks
- ❑ Hills & valleys

- ❑ Traditional recreational use
- ❑ Unfragmented forest blocks
- ❑ Wildlife corridors
- ❑ Rare & threatened communities
- ❑ Fisheries
- ❑ Urban green space

Specific Places:

- ❑ Mill Brook
- ❑ Pleasant River
- ❑ Upper Presumpscot
- ❑ Presumpscot Falls



Feedback

Plus (+):

- Efficient use of time
- Excellent facilitation, format, agenda
- Good breakout group questions & discussions
- Level of participation, representation & engagement
- Location/facility

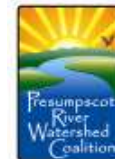
Delta (\triangle) :

- Seek better municipal participation
- Product/outcomes/expectations?
- Engage business, landowners
- Background information
- Next steps?



What's Next?

- Stakeholder meeting
November 30th
- Steering Committee
meeting November
10th
- Winter 2010 – 2011
 - ▣ Public Forums
 - ▣ Stakeholder meetings
 - ▣ Map development
 - ▣ Prioritization



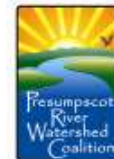


Lessons Learned

What have we learned so far?



- ❑ Broad support & interest
- ❑ Dependent on individual commitment
- ❑ Define shared goals, process, roles, outcomes at onset
- ❑ Volunteers & P/T staff integral, but availability limited
- ❑ Tradeoff b/t grassroots approach (more work) vs. existing models (less control)



What have we learned so far?

Collaboration:

- Time, resource intensive
- Lack of clear 'lead' organization & staff
- Tension: pre-define project outcomes, or develop outcomes collaboratively?

Process:

- Important, but not what attracts participants
- Avoid 'process drift'



Thank You!

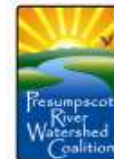


Environmental Funders Network

A project of the Maine Community Foundation and the Maine Philanthropy Center



Quality of Place Initiative
2009, 2010 Grant Funding





For More
Information

chair@presumpscotcoalition.org

or

Matt Craig

228-8359

mcraig@usm.maine.edu