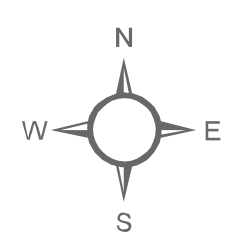
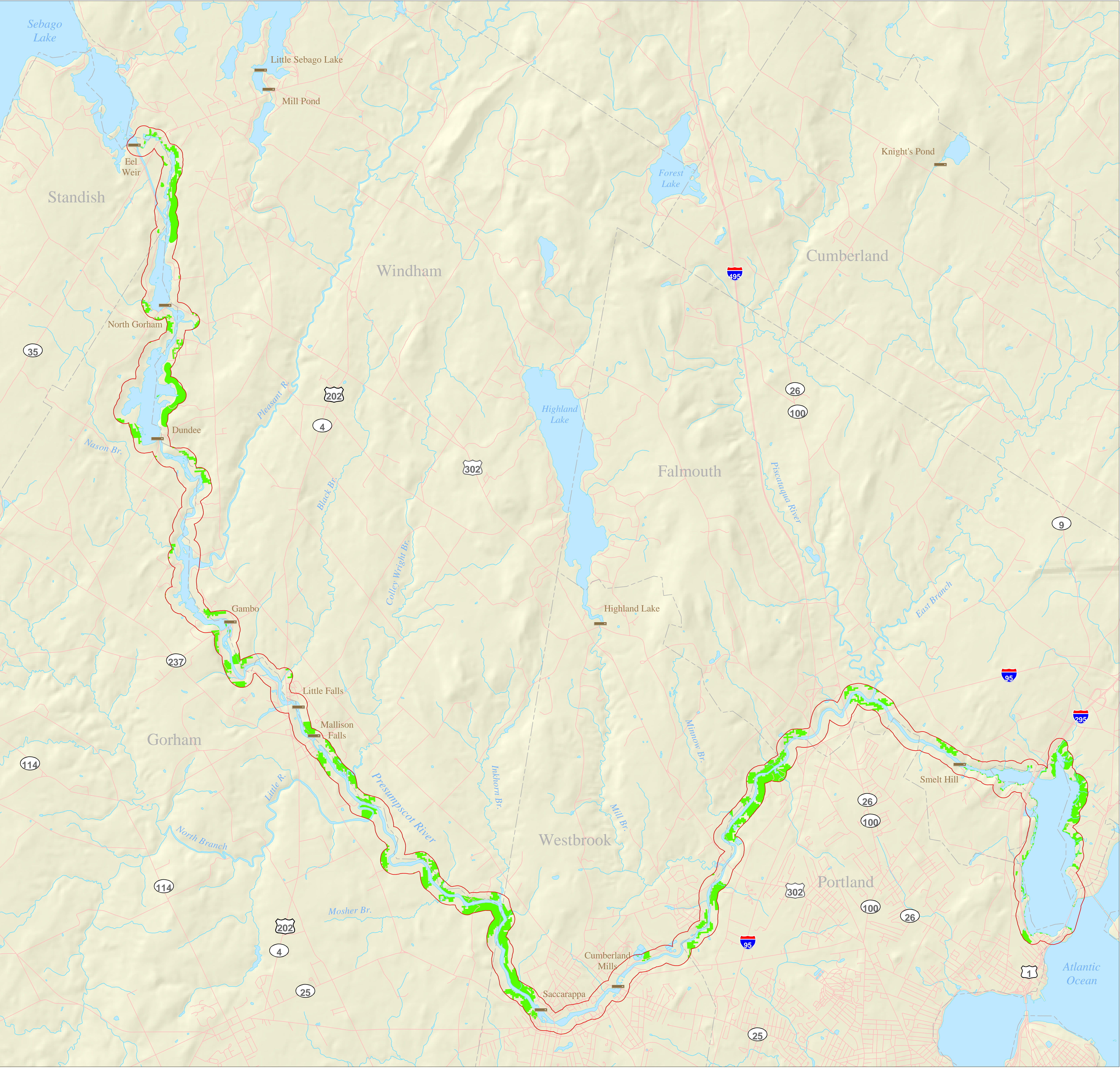


Map 2: Open Space with High Natural Resource Values Along the Presumpscot River Corridor



Map Scale 1:25,000



Legend

- Open Space with High Natural Resource Values within 500 feet of the Presumpscot River
- Surface Water
- River
- Town Boundary
- 500 Foot Buffer
- Road
- Dam

Open space with high natural resource values defined as wetlands, high value habitat for USFWS priority trust species, deer wintering areas, rare animal habitat, and prime farmland.

Data Sources:
Surface Water, Town boundaries, and Roads from MEGIS at 1:24,000.
Dams from US Army Corps of Engineers at 1:24,000.
Shaded relief from National Elevation Dataset at 1:24,000.
Habitat data from MDIFW, Maine State Planning Office, and Land & Water Assoc. at 1:24,000 and USFWS, Gulf of Maine Watershed Habitat Analysis at 30 meter pixels.
L:\projects\basins\presumpscot\open_space2\os2_map2.mxd
12 March 2003

