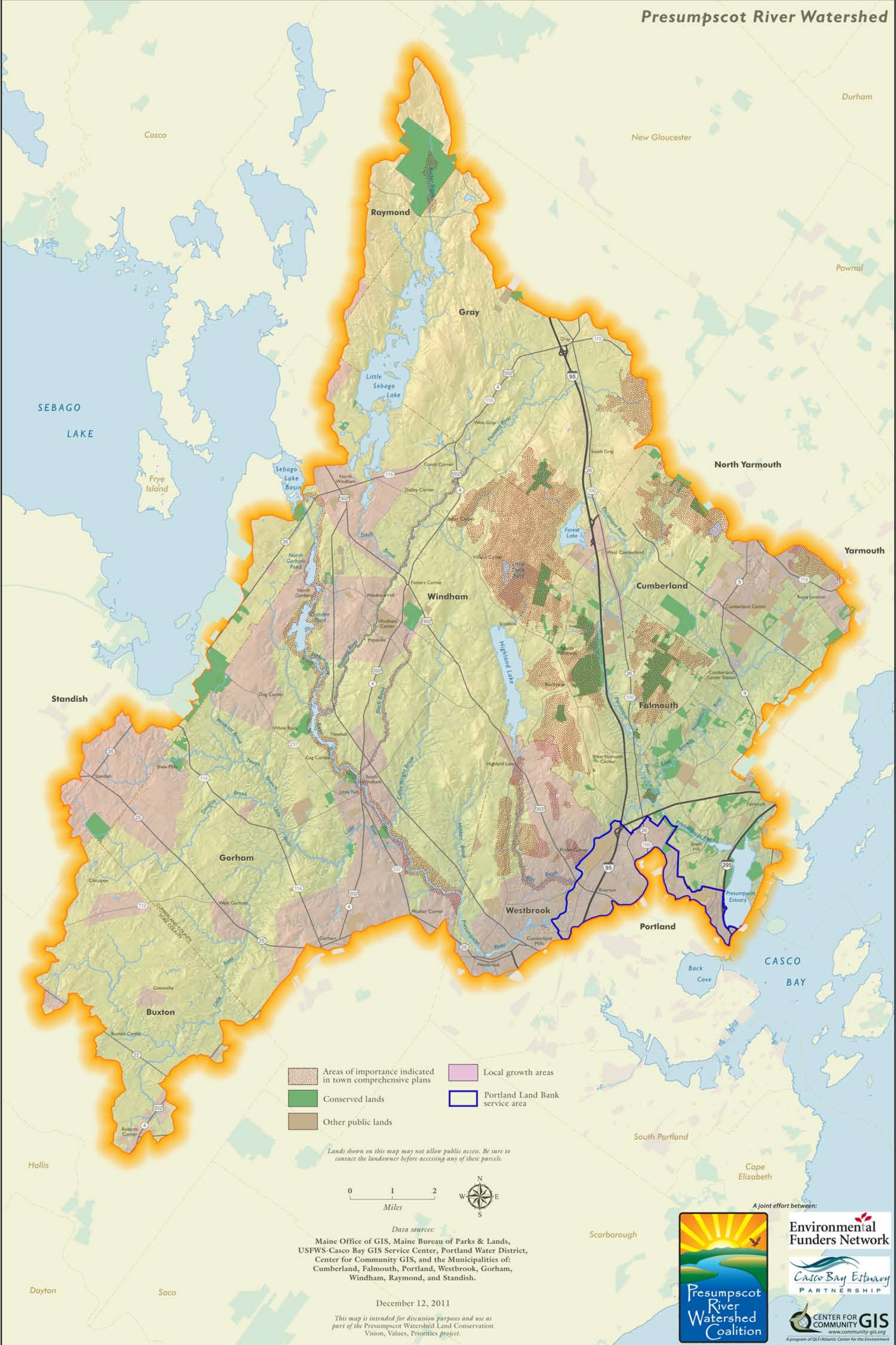


Areas of Importance - Municipal

Presumpscot River Watershed



- Areas of importance indicated in town comprehensive plans
- Conserved lands
- Other public lands
- Local growth areas
- Portland Land Bank service area

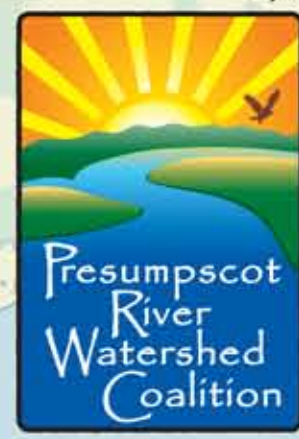
Lands shown on this map may not allow public access. Be sure to contact the landowner before accessing any of these parcels.



Data sources:
 Maine Office of GIS, Maine Bureau of Parks & Lands,
 USFWS-Casco Bay GIS Service Center, Portland Water District,
 Center for Community GIS, and the Municipalities of:
 Cumberland, Falmouth, Portland, Westbrook, Gorham,
 Windham, Raymond, and Standish.

December 12, 2011

This map is intended for discussion purposes and use as part of the Presumpscot Watershed Land Conservation Vision, Values, Priorities project.



A joint effort between:
Environmental Funders Network

Casco Bay Estuary Partnership

CENTER FOR COMMUNITY GIS
 www.community-gis.org
 A program of OLF/Atlantic Center for the Environment