



LAKES ENVIRONMENTAL ASSOCIATION

Protecting Maine Lakes Since 1970

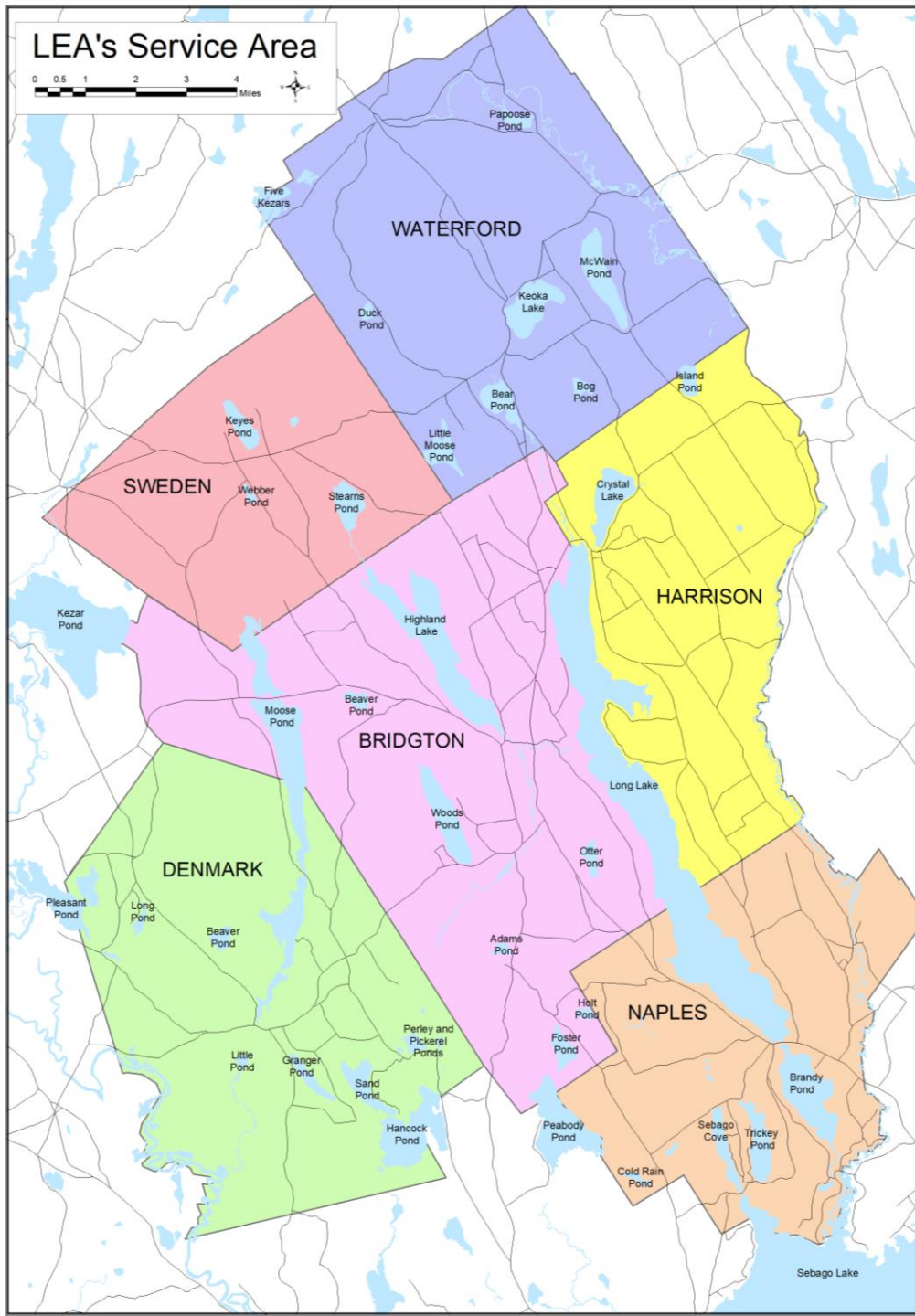


2020 Water Quality Update



Overview

- Brief introduction to LEA
- Broad summary of data
 - Chlorophyll-a
 - Clarity/ temperature
 - Total phosphorus/ coldwater fish habitat



LEA's Mission and Service Area

- LEA's mission is to preserve and restore the exceptional water quality of Maine's lakes, ponds, rivers, streams, and wetlands and the integrity of their watersheds.
- LEA provides comprehensive water testing for 40 lakes. Because of this long-term program, more is known about LEA's lakes than any others in the state.



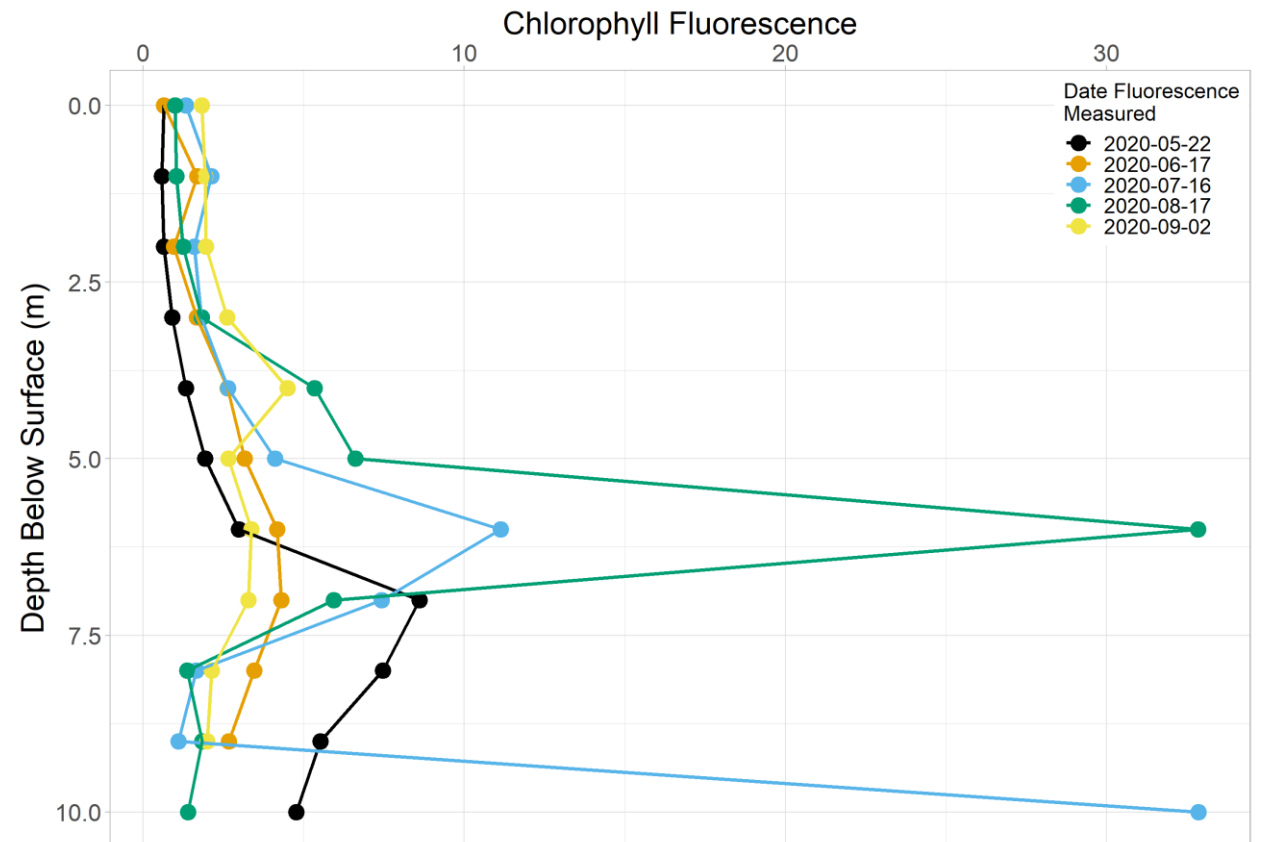
Chlorophyll a
Linear Trend 1996-2020

- decreasing
- increasing
- no trend

0 2.5 5 7.5 10 km

Chlorophyll-a Summary

Back Pond Fluorescence Profile
2020 Sampling Season





Secchi Disk Depth

Linear Trend 1996-2020

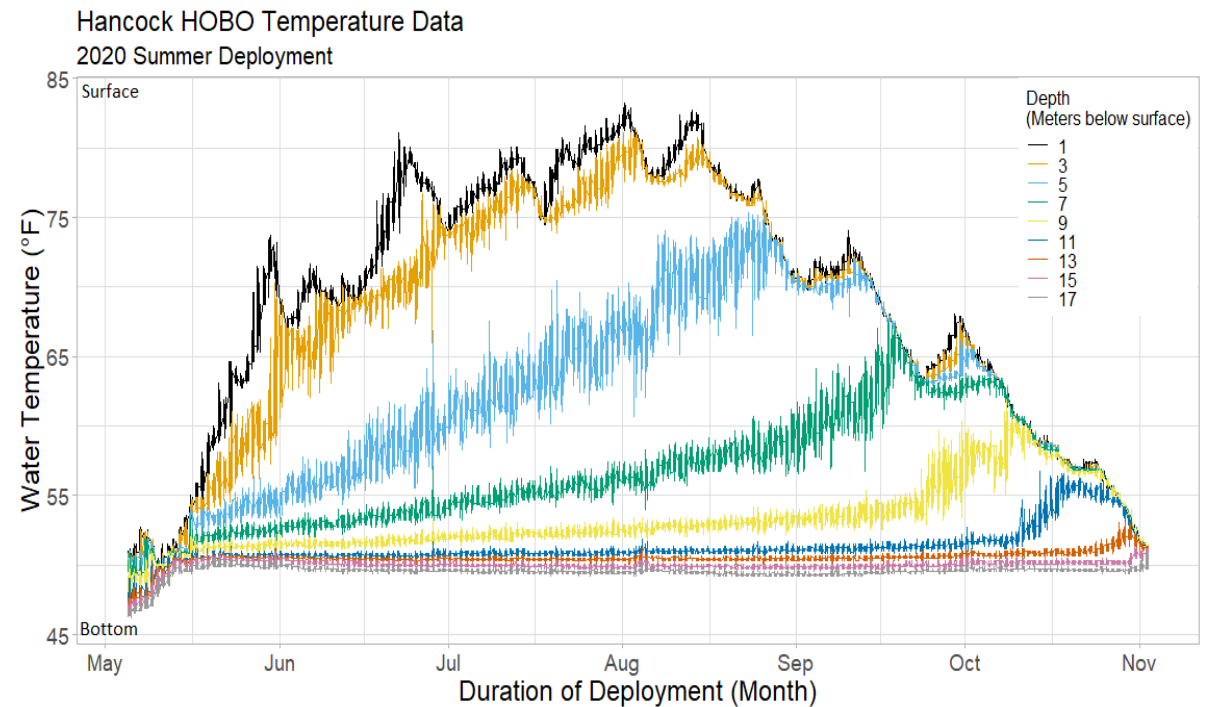
● decreasing

● increasing

○ no trend

0 2.5 5 7.5 10 km

Clarity and Water Temperature Summary





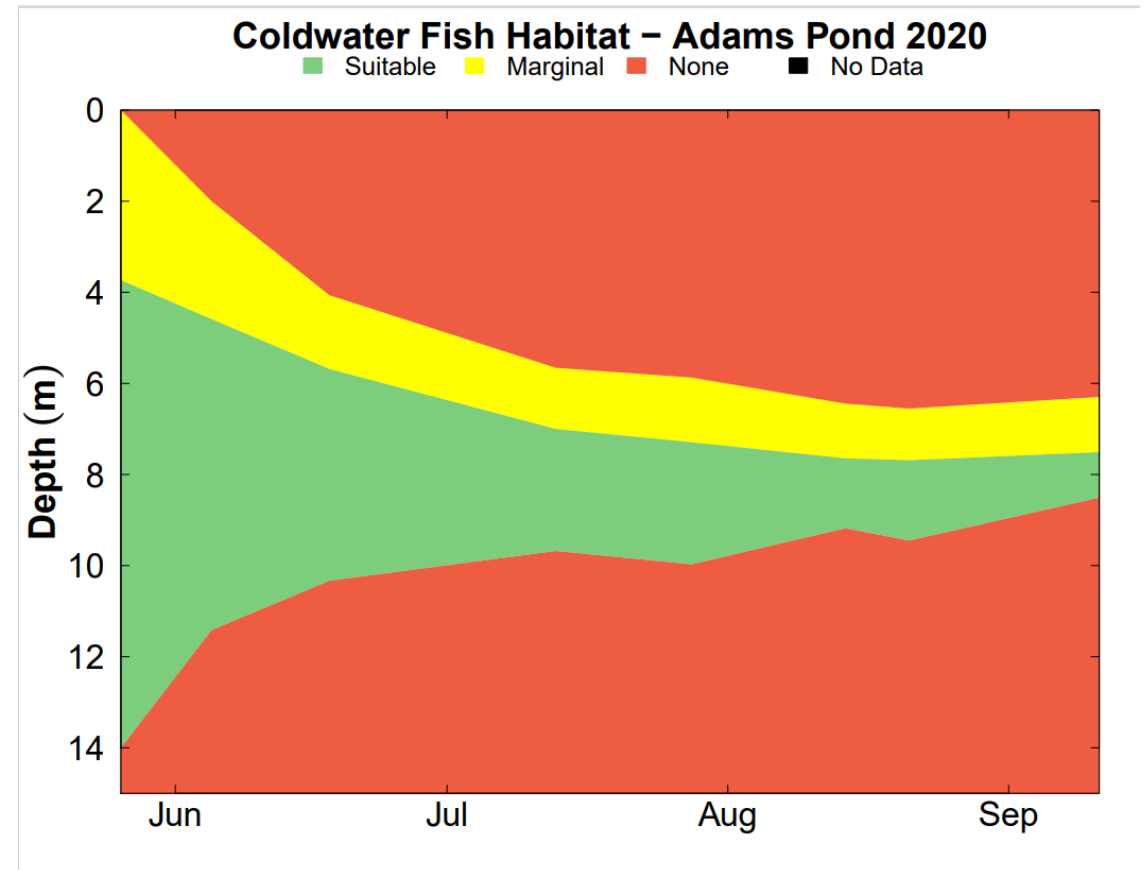
Total Phosphorus
Linear Trend 1996-2020

- decreasing
- increasing
- no trend

0 2.5 5 7.5 10 km



Total phosphorus and Fish Habitat Suitability Assessment



Go to website for info about specific lakes and pond or to see out water testing reports

Water testing reports

<https://mainelakes.org/water-testing-report/>

Near real-time buoy data for Long and Highland lakes

https://mainelakes.org/news_article/view-live-water-quality-data/

Information about individual lakes

<https://mainelakes.org/lake-information/>