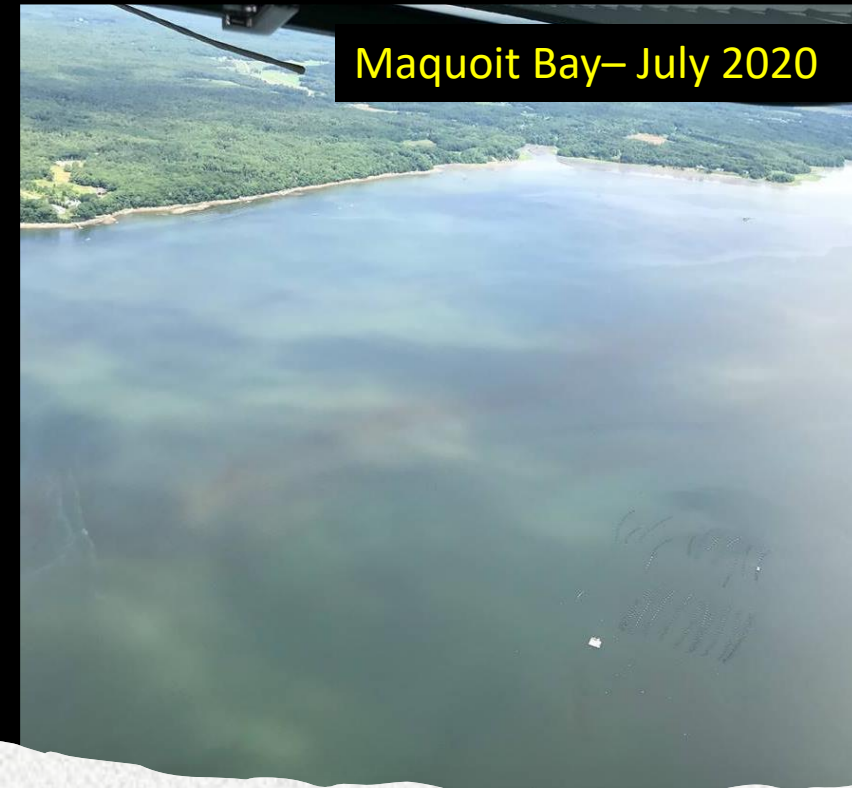


Maine Dept. of Marine Resources CBEP Monitoring Network 2020 Updates

- *Bryant Lewis*
- *Maine Department of Marine Resources*
- *April 14, 2021*



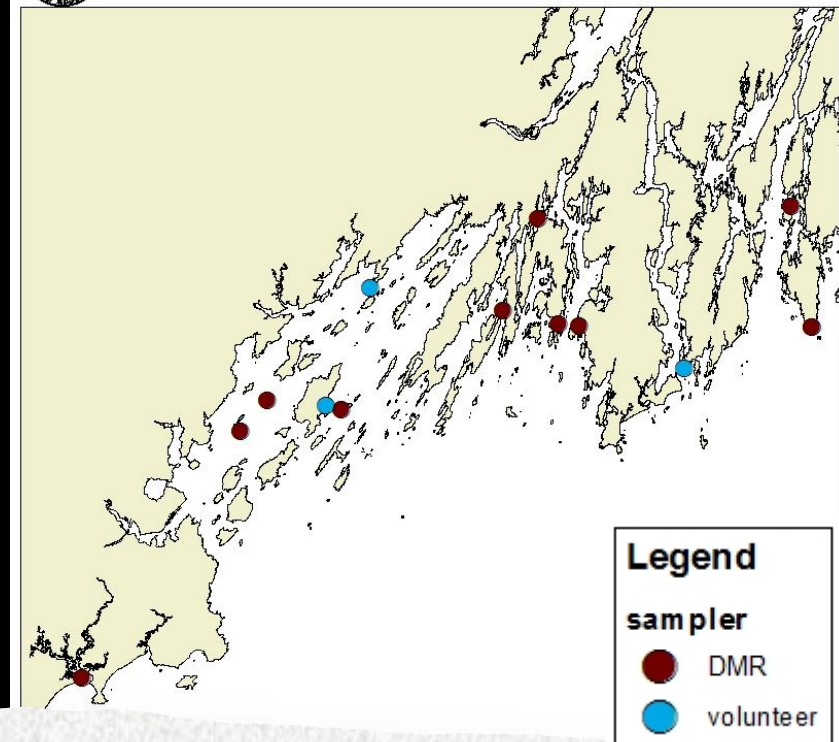
Maquoit Bay— July 2020



Gun Point Cove,
Harpwell— July 2020



Maine Department Marine Resources
2020 Casco Bay Phytoplankton Monitoring Stations



Phytoplankton Monitoring

- No current database for non-HAB events.
- DMR stations sampled year-round
 - Monthly ~Jan-April, weekly ~May to December
- Volunteer stations weekly May-September
- 178 samples collected in 2020

Lepidodinium chlorophorum, Brighams Cove West Bath



Lepidodinium chlorophorum,
photo courtesy Bigelow Laboratory



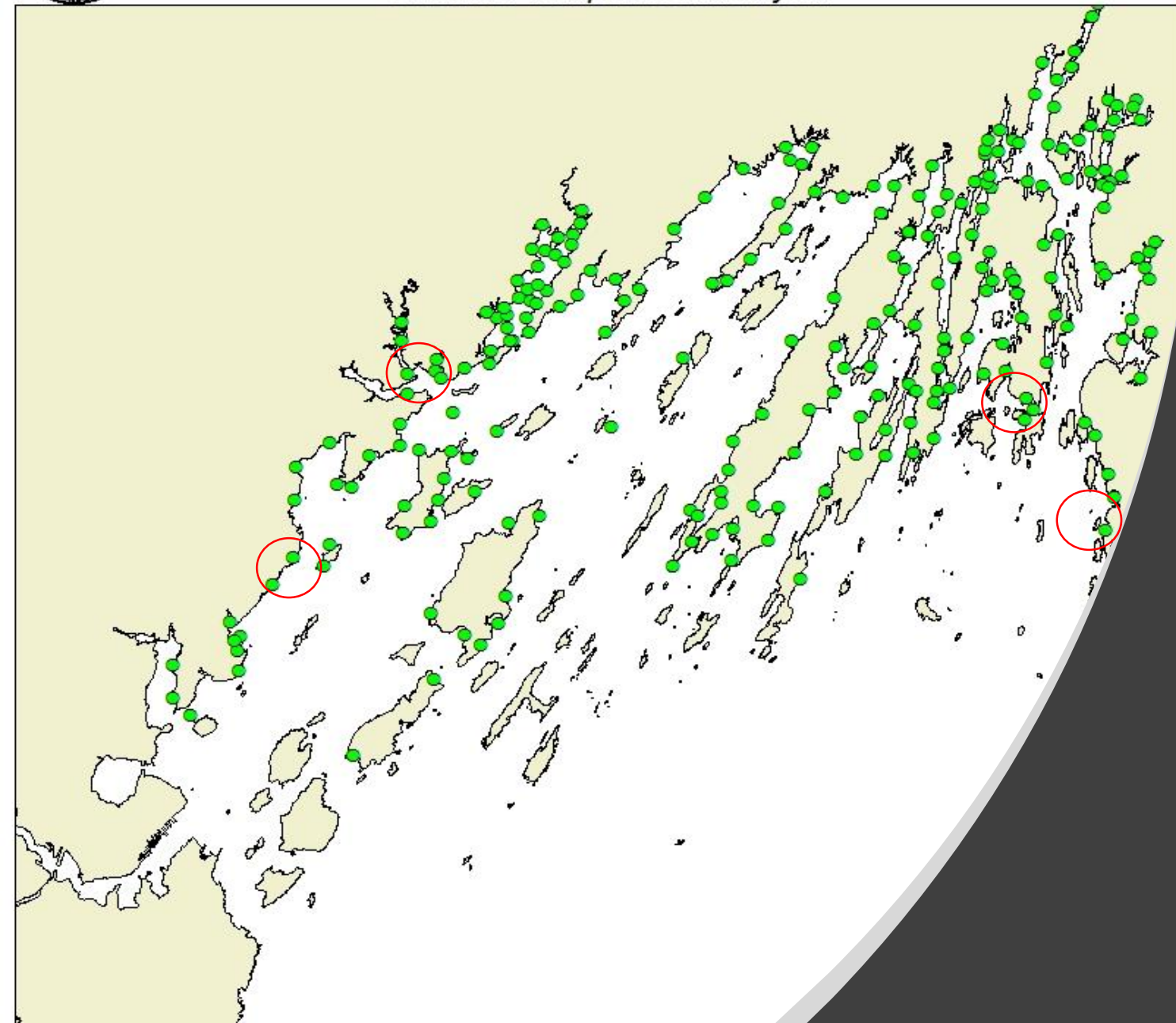


Maine Department Marine Resources
2020 Casco Bay Water Quality Monitoring Stations
245 sites sampled 6 times/year



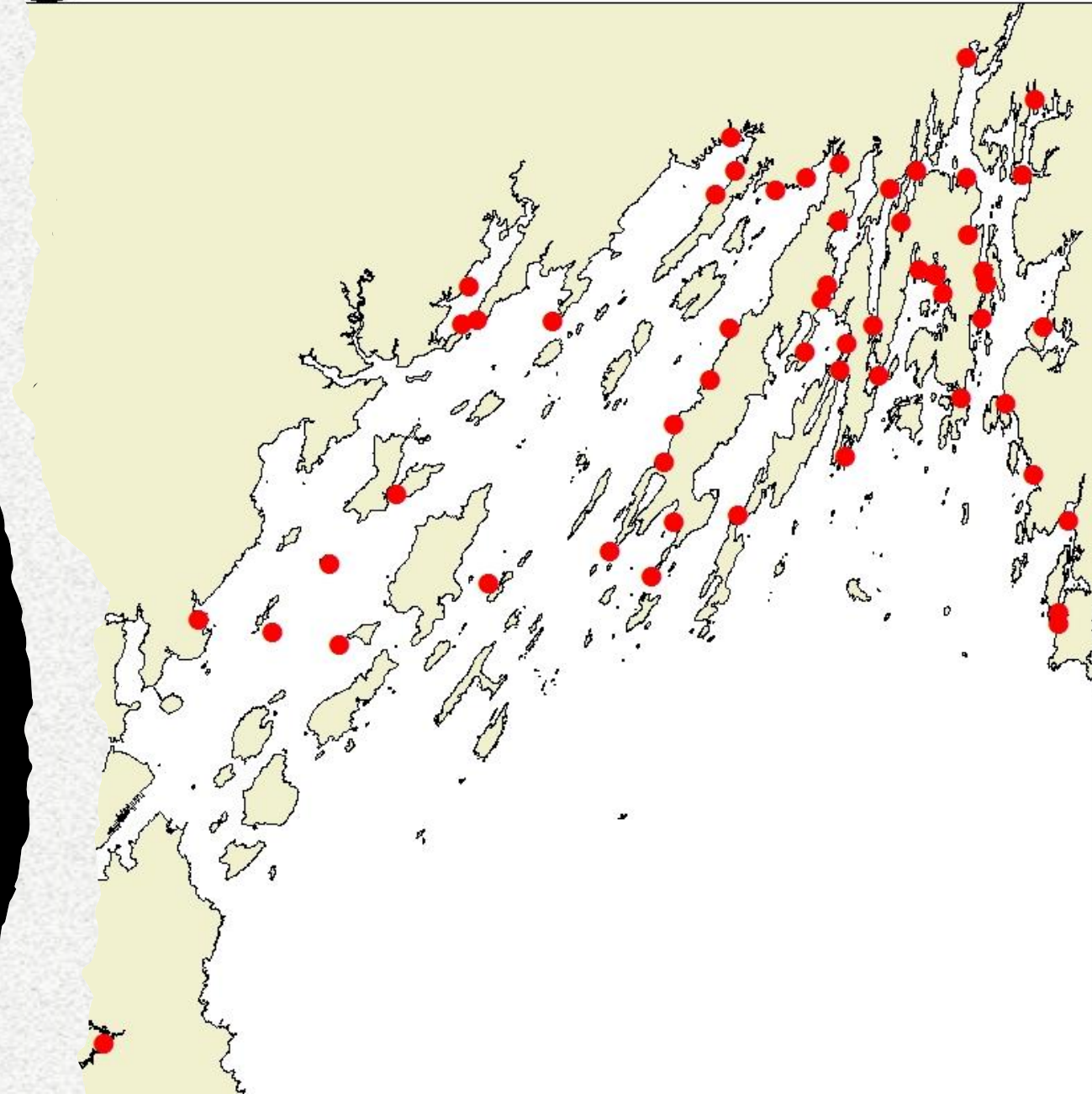
Fecal Coliform Water Quality Testing

- Testing for shellfish harvesting areas
- Most stations collected by municipalities
 - Exceptions: Yarmouth, Chebeague and surrounding islands
- Four downgrades in process due to 2020 scores (Red Circles)



Biotoxin Shellfish Testing

- Testing for shellfish harvesting areas
- Biweekly sampling at select “hotspot” stations March to April
- Weekly sampling May to August
- Weekly sampling post-August based if HAB-species present (*Pseudo-nitzschia*)
- 165 samples collected in 2020
- **MILD BIOTOXIN SEASON**





Log out

Maine - New Hampshire Inshore Trawl Survey Data Portal

[About](#) [Species Indices](#) [Catch at Length](#) [Species Distribution Map](#) [Maturity Data](#)

[Environmental Data](#) [Download Raw Data](#)

Filter data with the following selectors:

Species:

Alewife

Season:

Fall

Survey Year:

2020

Map Controls

Map Type

Single Survey

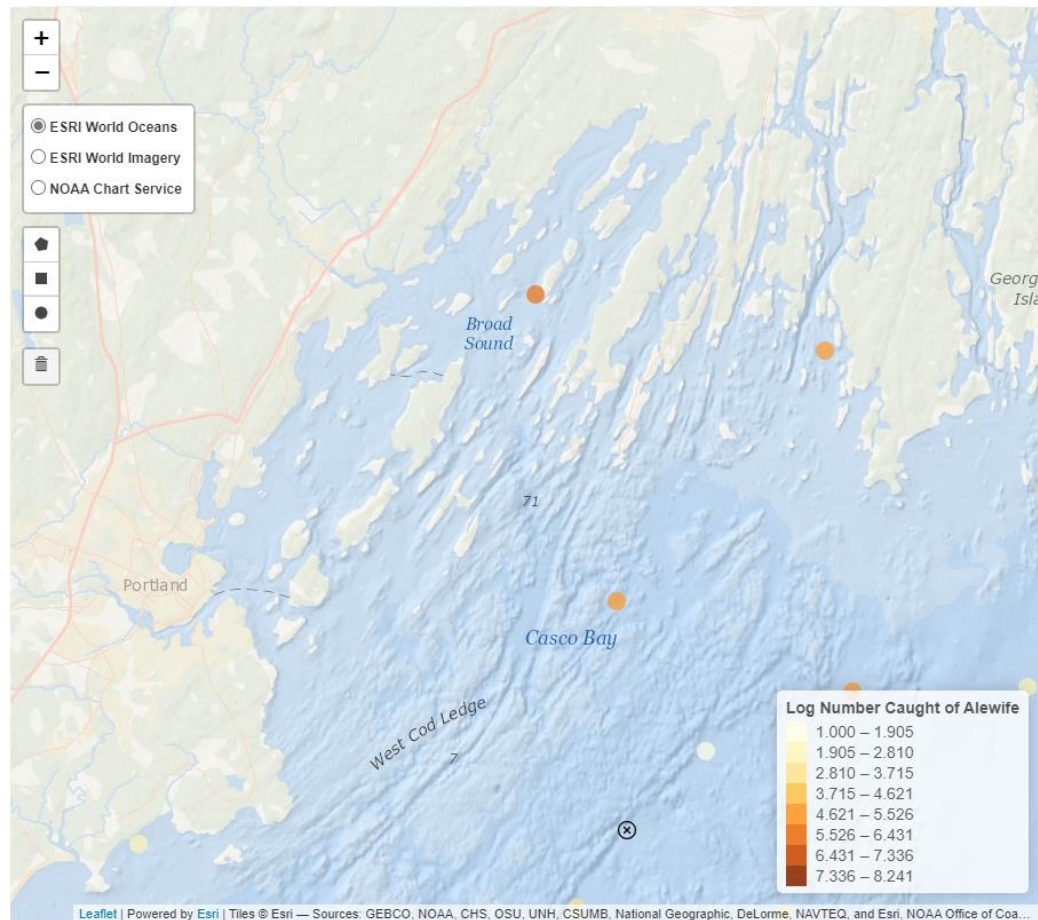
Color Scheme

YlOrBr

Map Variable

Number Caught

☒ Log Adjust Map Color Scale



Maine/NH Inshore Trawl Survey

- Online since spring 2020
- Available to the public
- Shinyapp

[Maine DMR MENH Inshore Trawl Survey Data Portal \(shinyapps.io\)](https://shinyapps.io/MaineDMRMENHInshoreTrawlSurveyDataPortal/)