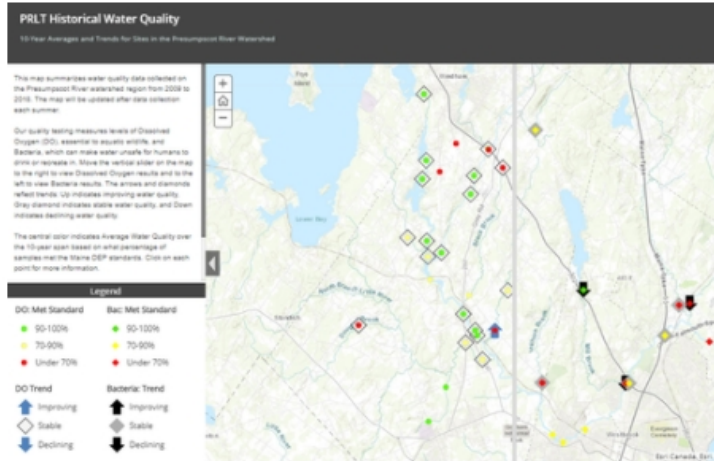


WATER QUALITY MONITORING

We are currently seeking volunteer Water Quality Monitors for the 2021 season. Email toby@prlt.org for more information or [click here to sign up](#).

The Presumpscot Regional Land Trust coordinates volunteer water quality sampling throughout the region.

We maintain an online map that shows 11-year averages and trends for water quality at our sample sites. Please click on the map to the right to explore a full-screen version.



+ WHAT OUR MONITORING MEASURES

+ HOW AVERAGES AND TRENDS ARE CALCULATED

You can explore the results from last year's Water Quality Monitoring program below. [Please click here to see a full-screen version](#).

2020 Water Quality Testing Results - Presumpscot River Watershed

Thank you to all of the volunteer Water Stewards who collected these data in 2020

Move the vertical slider bar on the map to switch between Bacteria and Dissolved Oxygen results, and click on each site for more information.

Water quality monitoring is an important way to assess the health of rivers and streams for both humans and wildlife. It can help us identify important places to conserve land and potential restoration projects.

An important indicator of water health for human use and recreation is when levels of ***E. coli* bacteria levels are low**. Aquatic life, like fish and invertebrates, requires **high levels of dissolved oxygen** to survive and thrive.

Results are classified according to how many of the samples at each site met Maine Department of Environmental Protection Standards for their Water Quality Class (A

Legend

Samples that Met Bacteria Standards

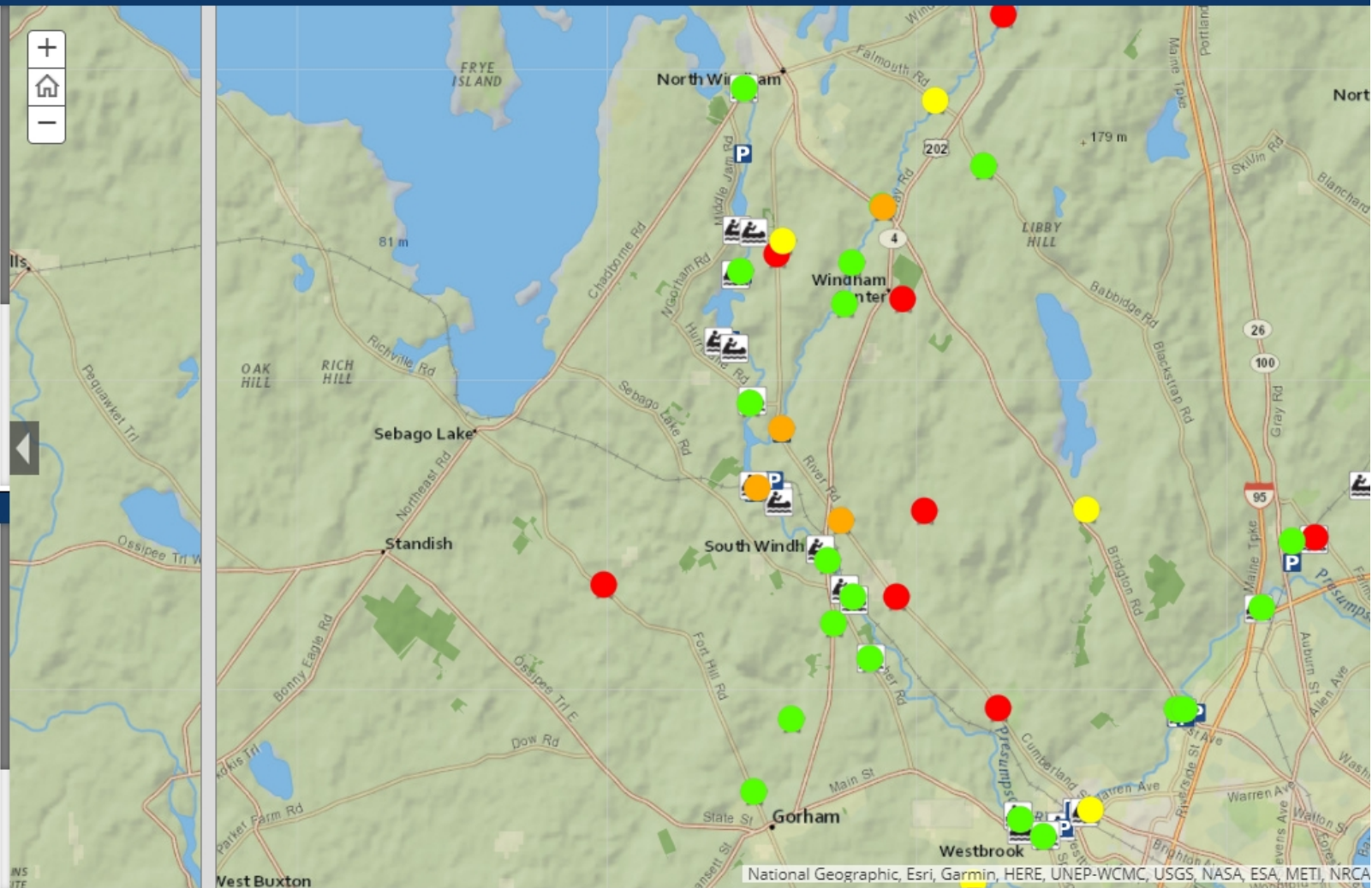
- ★ 100%
- ★ 70-99%
- ★ 50-69%
- ★ <50%

Samples that Met Dissolved Oxygen Standards

- 100%
- 70-99%
- 50-69%
- <50%

Paddle Access and Parking

- 🚣 Hand-carry
- 🚗 Boat Launch



2020 Water Quality Testing Results - Presumpscot River Watershed

Thank you to all of the volunteer Water Stewards who collected these data in 2020

Move the vertical slider bar on the map to switch between Bacteria and Dissolved Oxygen results, and click on each site for more information.

Water quality monitoring is an important way to assess the health of rivers and streams for both humans and wildlife. It can help us identify important places to conserve land and potential restoration projects.

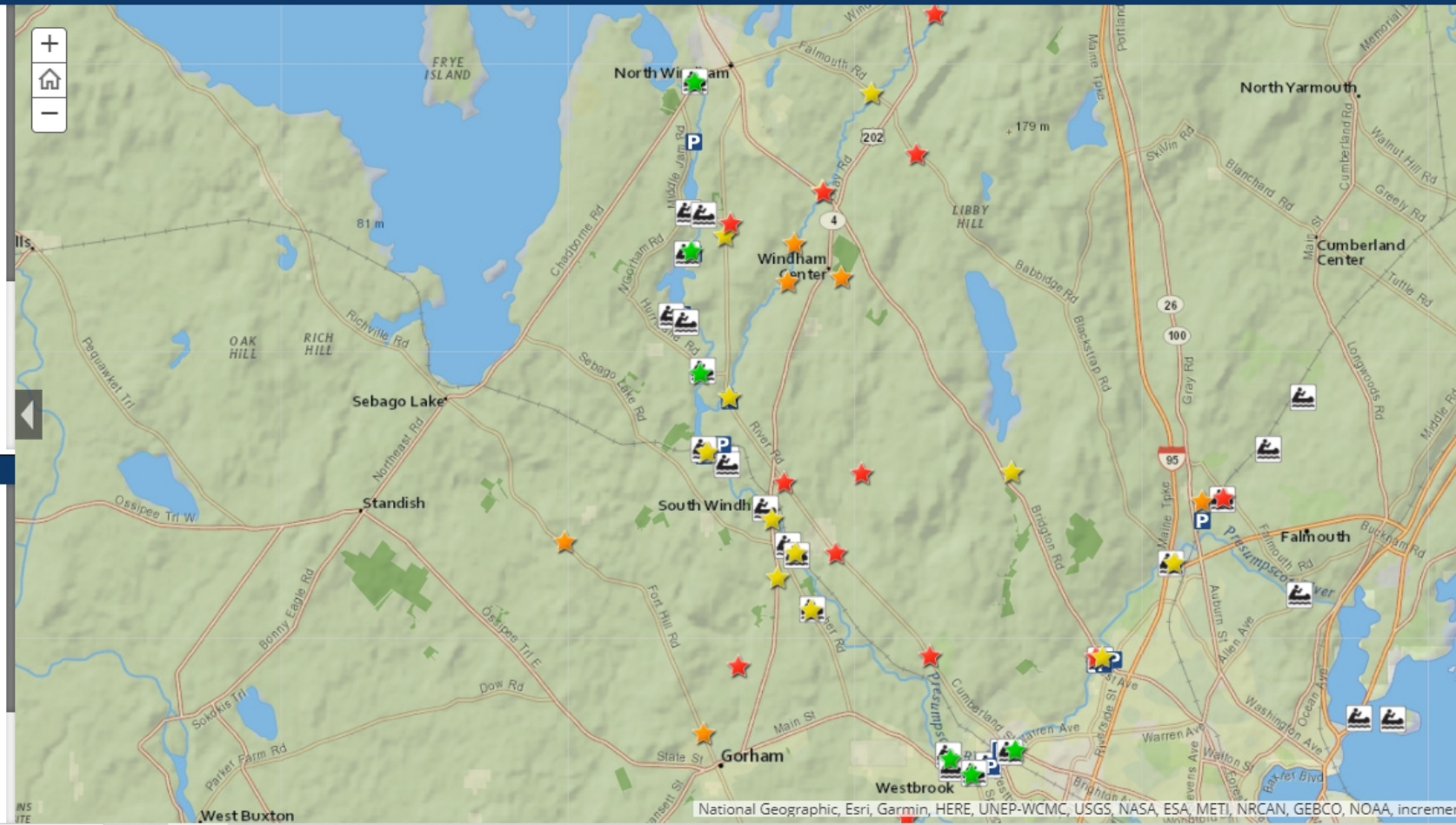
An important indicator of water health for human use and recreation is when levels of **E. coli bacteria levels are low**. Aquatic life, like fish and invertebrates, requires **high levels of dissolved oxygen** to survive and thrive.

Results are classified according to how many of the samples at each site met Maine Department of Environmental Protection Standards for their Water Quality Class (A

Legend

Samples that Met Bacteria Standards	Samples that Met Dissolved Oxygen Standards
★ 100%	● 100%
★ 70-99%	● 70-99%
★ 50-69%	● 50-69%
★ <50%	● <50%

Paddle Access and Parking
🚣 Hand-carry
🚗 Boat Launch

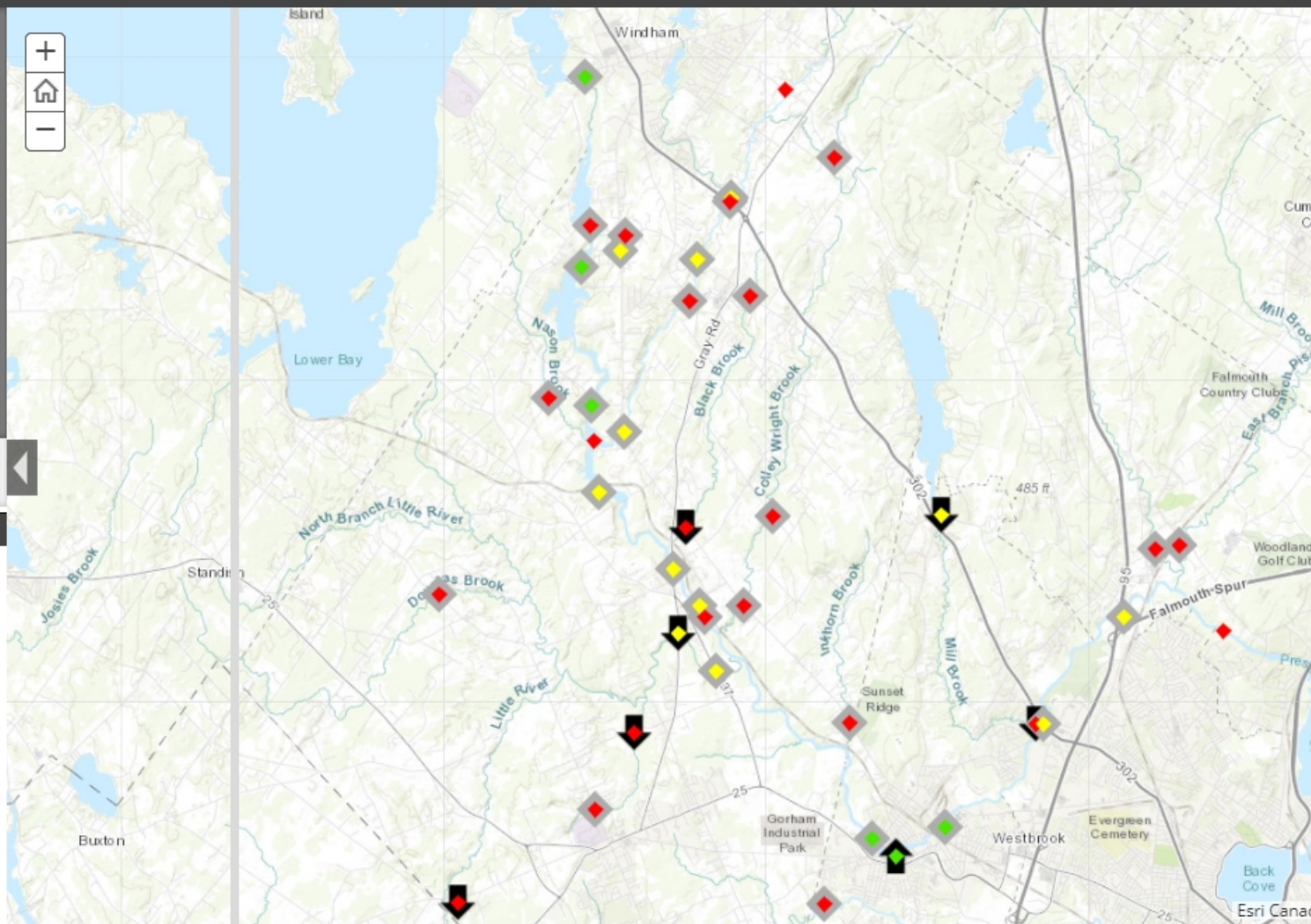


Water Quality Trends in the Presumpscot River Watershed - 2009-2020

This map summarizes water quality data collected in the Presumpscot River watershed region from 2009 to 2020. The map will be updated after data collection each summer.

Our quality testing measures levels of Dissolved Oxygen (DO), essential to aquatic wildlife, and Bacteria, which can make water unsafe for humans to drink or recreate in. Move the vertical slider on the map to the right to view Dissolved Oxygen results and to the left to view Bacteria results. The arrows and diamonds reflect trends: Up indicates improving water quality, Gray diamond indicates stable water quality, and Down indicates declining water quality.

The inside color indicates Average Water Quality over the 11-year span based on what percentage of samples met the Maine DEP standards. Click on each point for more information.



Legend

DO: Met Standard

- 90-100%
- 70-90%
- Under 70%

Bac: Met Standard

- 90-100%
- 70-90%
- Under 70%

DO Trend

- Improving
- Stable
- Declining

Bacteria: Trend

- Improving
- Stable
- Declining

