

The Marine Invader Monitoring and Information Collaborative

2020 project update – Casco Bay

Jeremy Miller, Wells National Estuarine
Research Reserve. Wells, ME



What is MIMIC?

- A network of trained volunteers, scientists and state agency workers
- Monitor for marine invasive species along the New England coastline



national estuarine research reserve system

MIMIC Summary

Since 2008

114 sites have been monitored

15 non-profits and individuals have
been involved from RI to ME

Over 1000 (1181) monitoring
events at over 100 sites (114)

Currently

~50 sites monitored each year

9 groups participating

7 Groups participating since 2008/2009

North South River Watershed Association

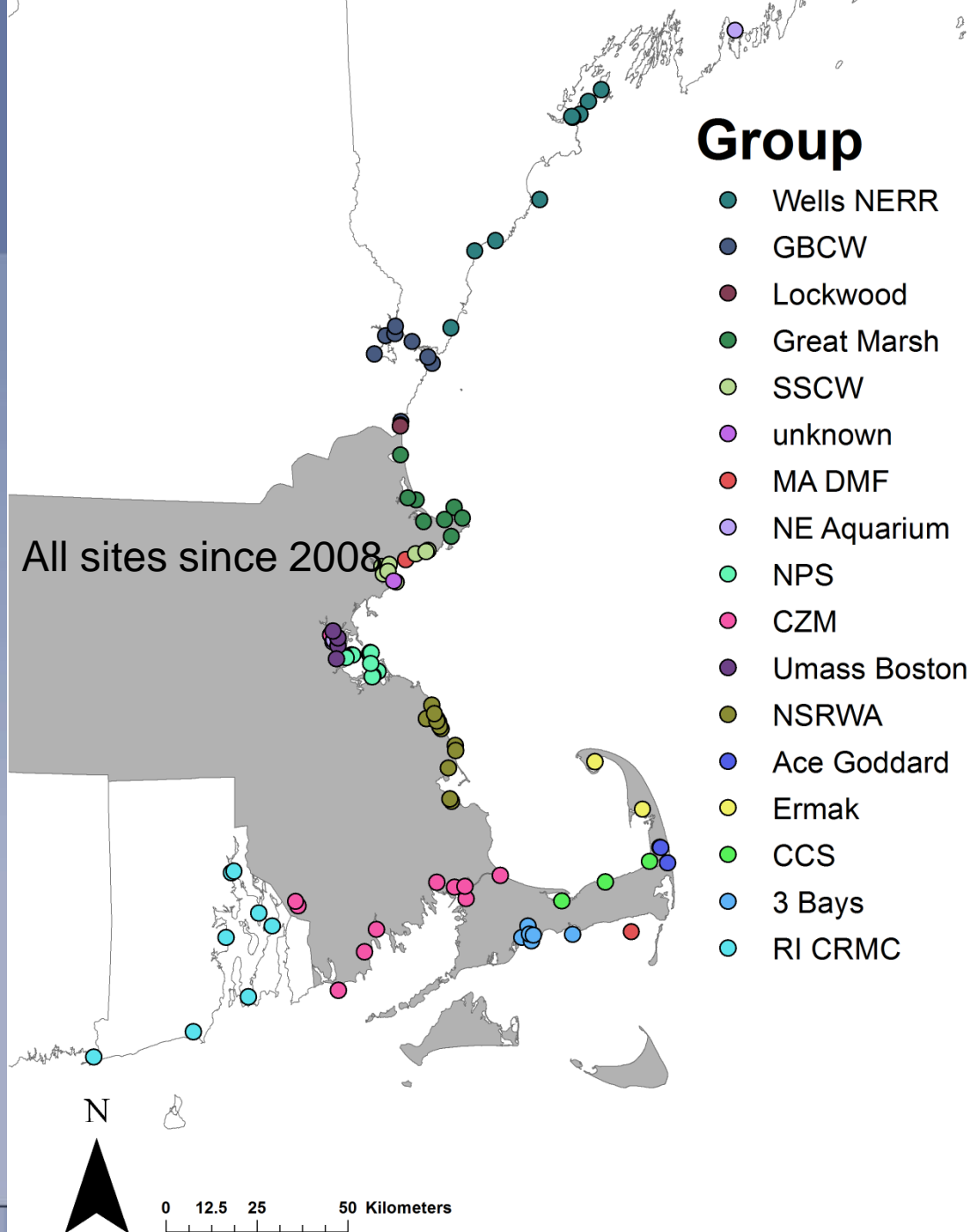
Great Marsh

Salem Sound Coastwatch

Wells National Estuarine Research
Reserve

Three Bays Preservation

National Park Service/New England
Aquarium

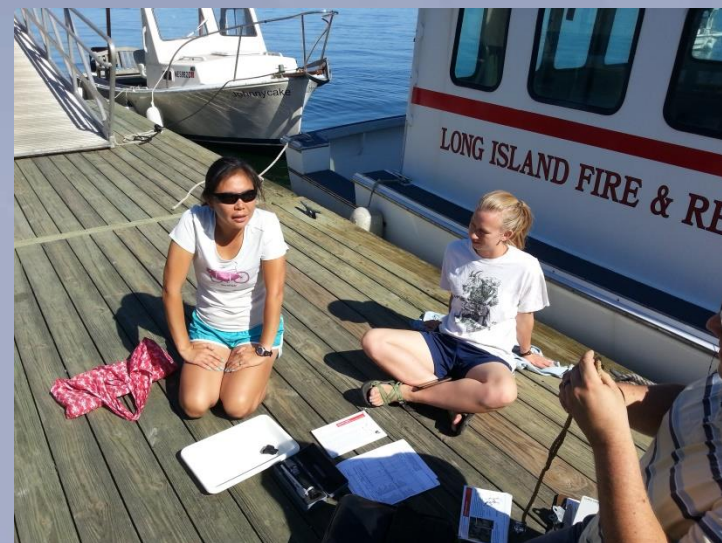


Wells NERR and CBEP

Partnering to expand our reach to the Islands of Casco Bay

CBEP Identifies the need to better engage the island communities of Casco Bay

- Enter Curtis and Co. with funding and logistical support
- We started in 2014 with 2 islands, 2 sites, and 4 volunteers (Peaks and Chebeague)
- Great Diamond Is. Added in 2020 (2 sites)
- Currently have 9 sites on 4 islands with 20+ volunteers (not counting school children)



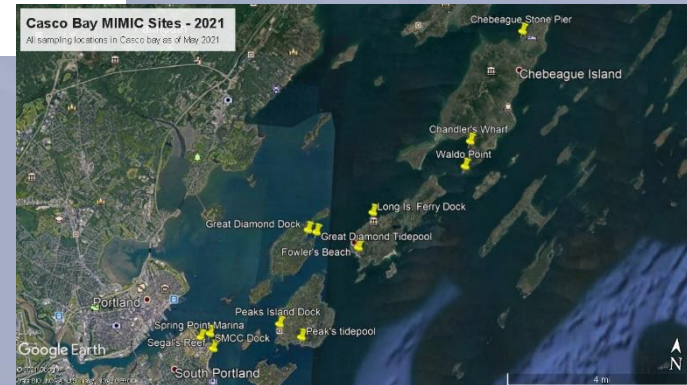
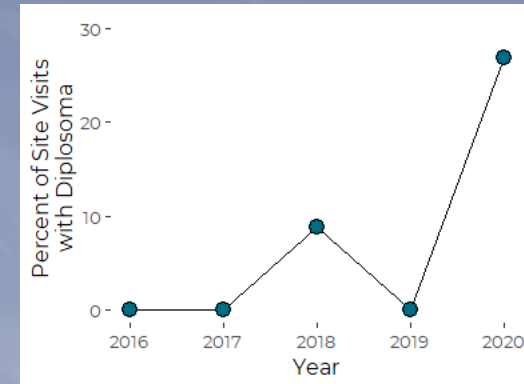
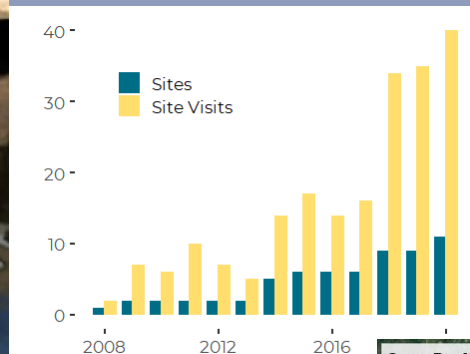
Casco Bay MIMIC Sites - 2021

All sampling locations in Casco bay as of May 2021

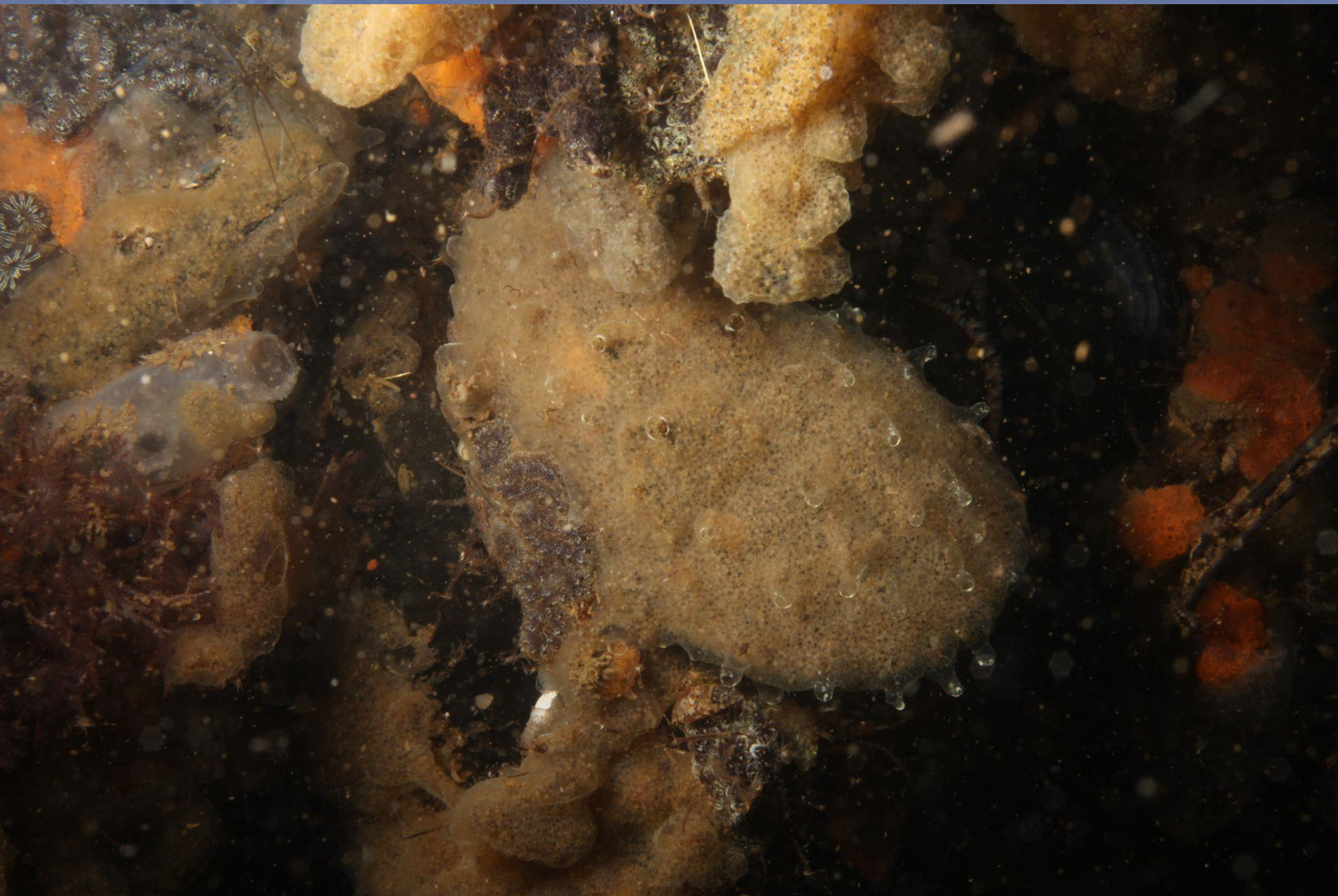


State of the Bay report

Working with Matt and Curtis to include MIMIC data in a “spotlight” on Invasive species!









New Volunteers added!



Friends of Casco Bay
Casco BAYKEEPER

- 9 new volunteers
- SMCC sites
- All ages/abilities
- Thanks FOCB!



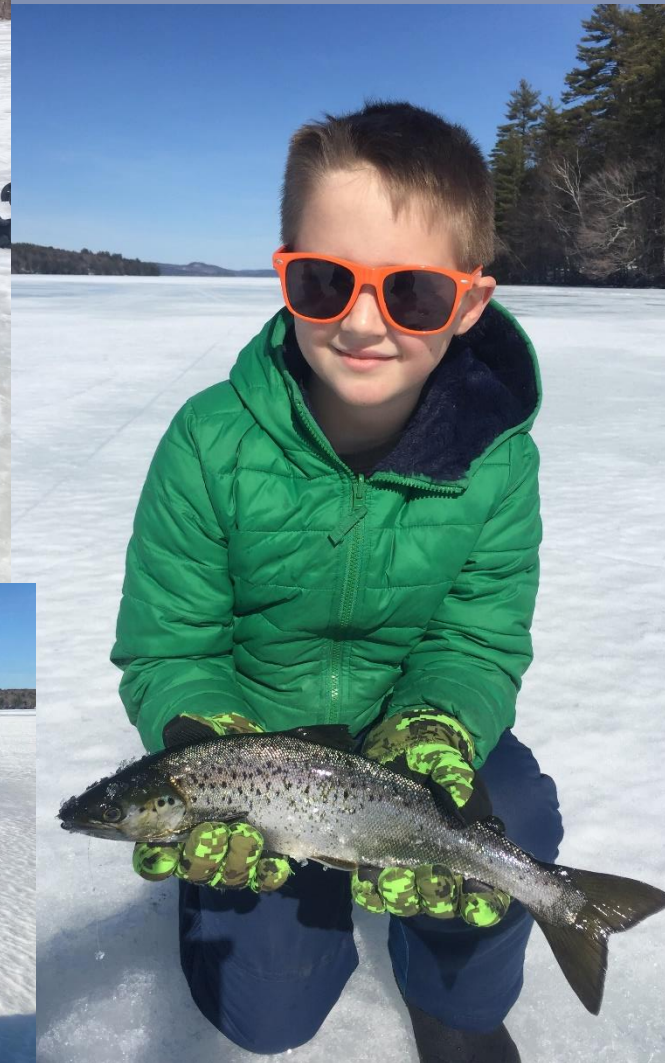
national estuarine research reserve system

MIMIC Marches on

- Encouraged by growth of program and recent collaborations
- Aware of “limitations” of dataset, however the “eyes on the ground” have proven very useful!
- Change is only detected by **GOOD**, reliable, long term monitoring data.
 - Increased data quality and faith in “system”
 - QAPP and SOP helping!
 - Bi-annual site visits to ALL sites by coordinator
 - Lots of photos, and species confirmations!



THANKS FOR YOUR SUPPORT!



national estuarine research reserve system