



# Recent Casco Bay monitoring efforts at GMRI

Graham Sherwood  
Interim Chief Scientific Officer

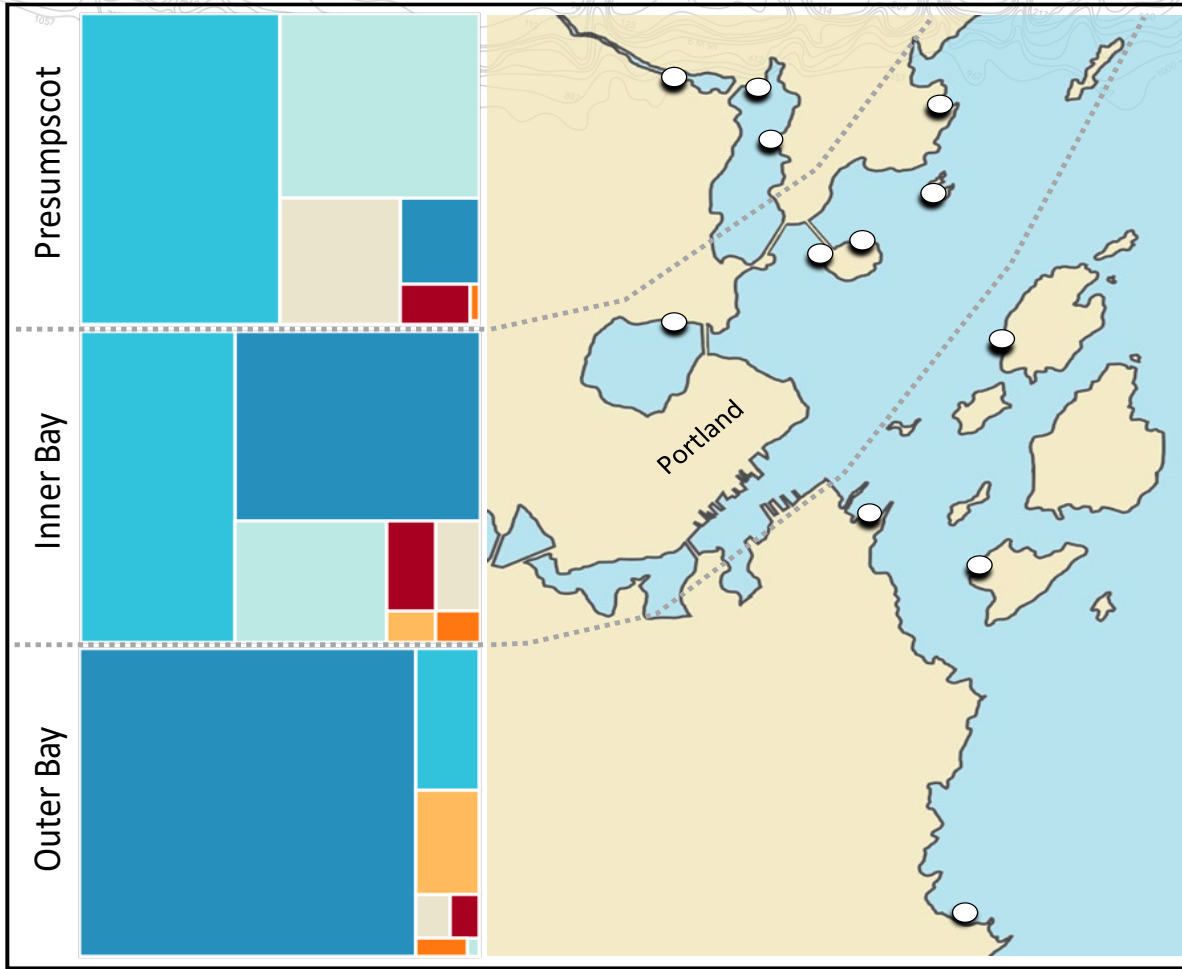


**Gulf of Maine  
Research Institute**

Science. Education. Community.

# CBASS

## Casco Bay Aquatic Systems Survey (2014 – 2022)



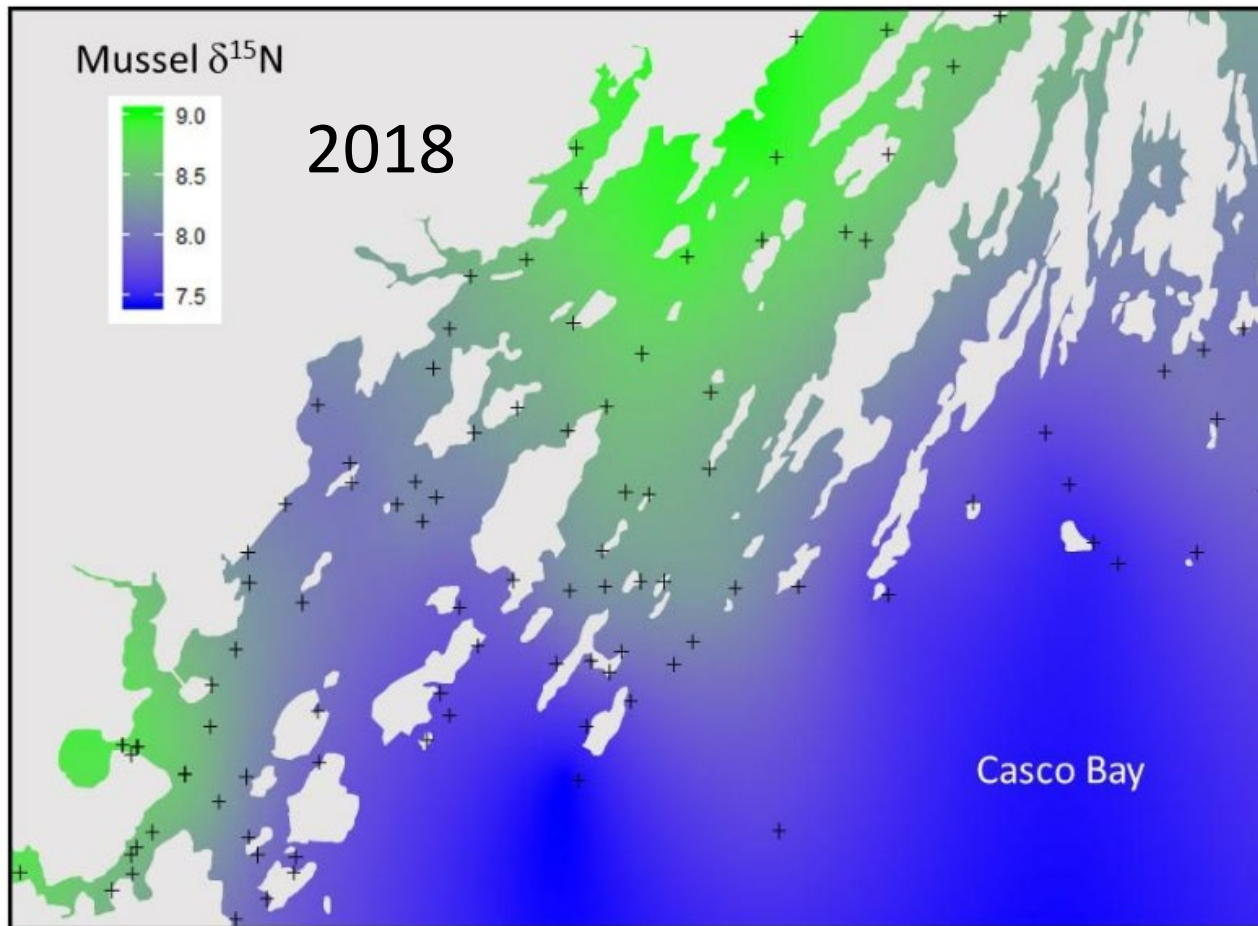
**Figure 3.** Map of western Casco Bay showing location of 12 seine sites further classified as Presumpscot River, Inner Bay and Outer Bay sites (separated by dotted lines). Tree maps on left show relative abundance of the top 7 species at these sites (see figure 1 for species' color legend).





# Mussel monitoring

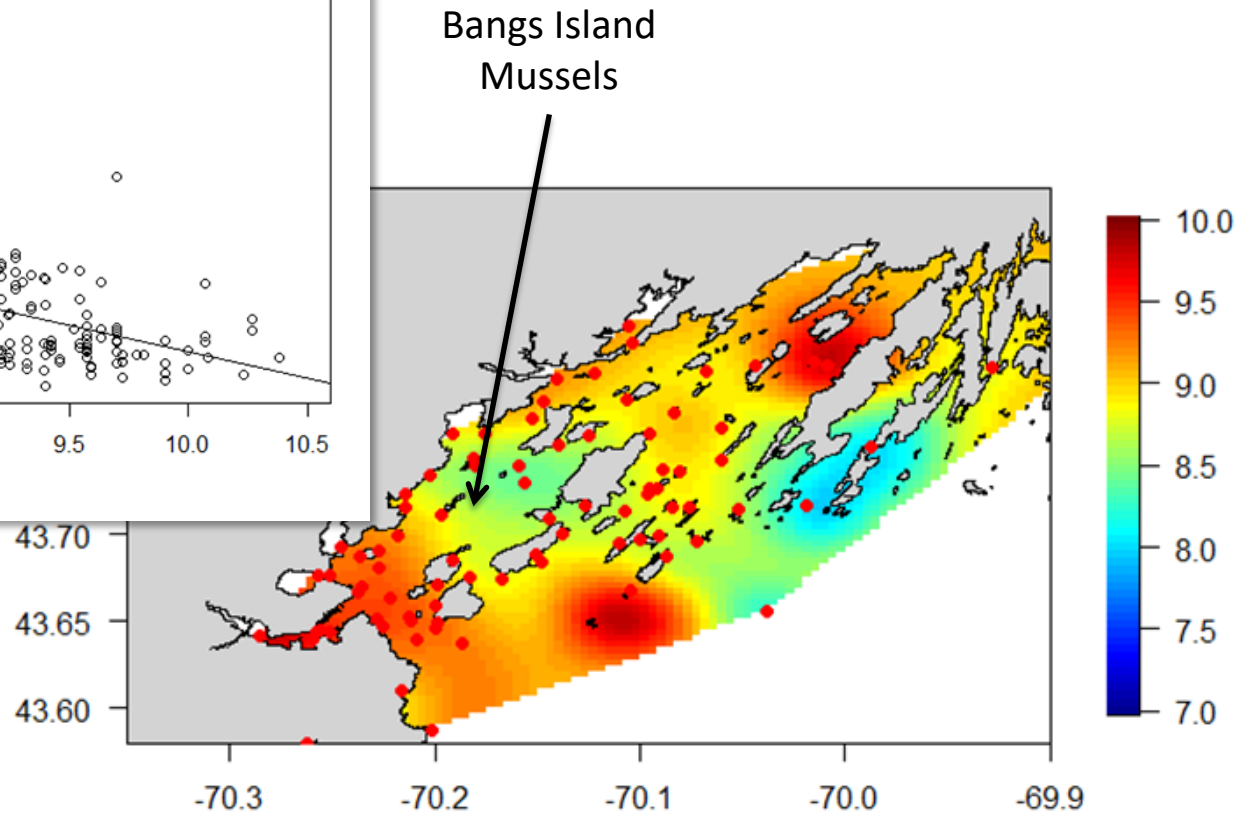
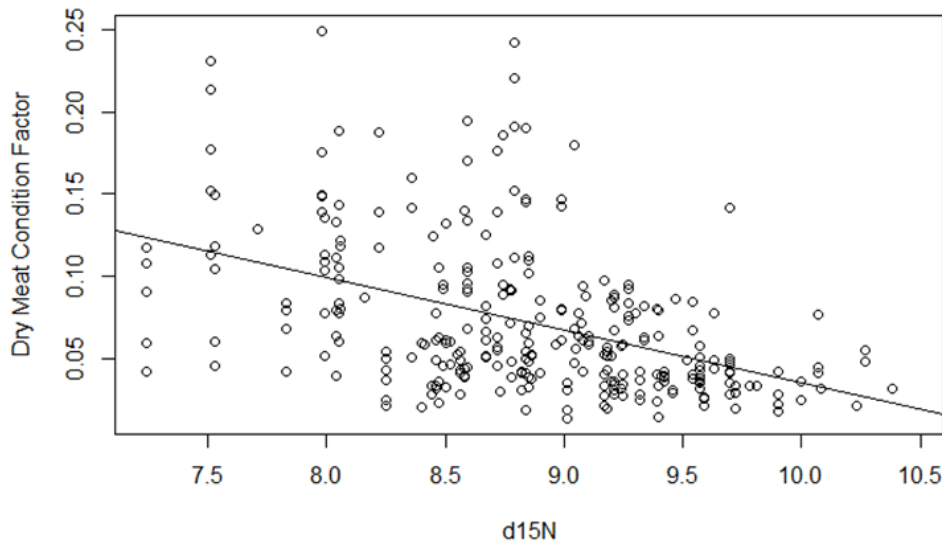
Higher  $\delta^{15}\text{N}$  is an indicator of human-derived nitrogen





# Mussel monitoring

Higher  $\delta^{15}\text{N}$  is an indicator of human-derived nitrogen

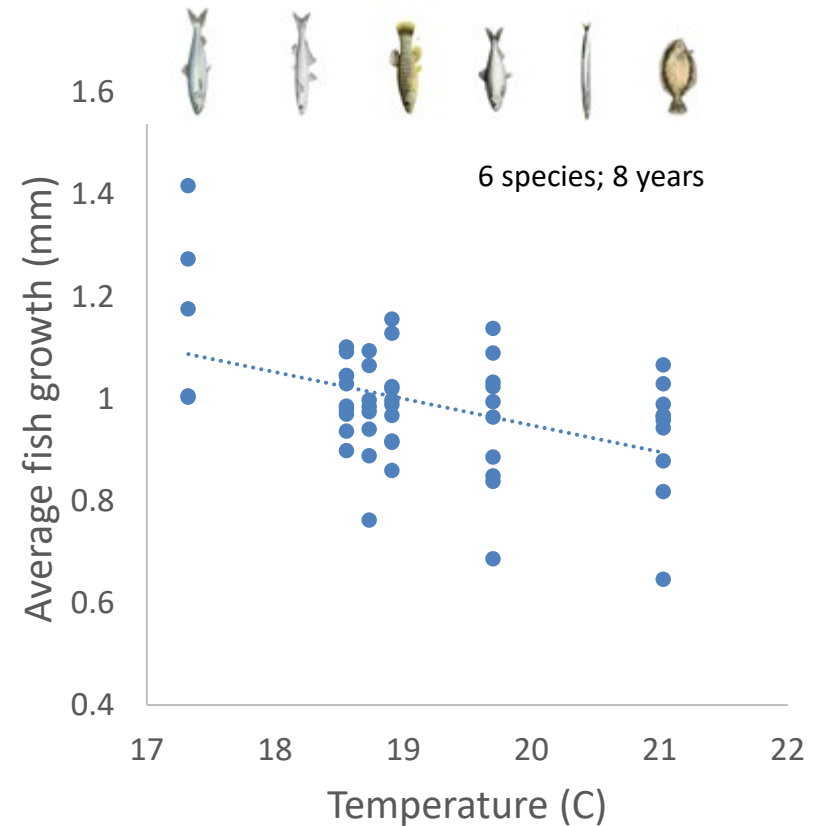
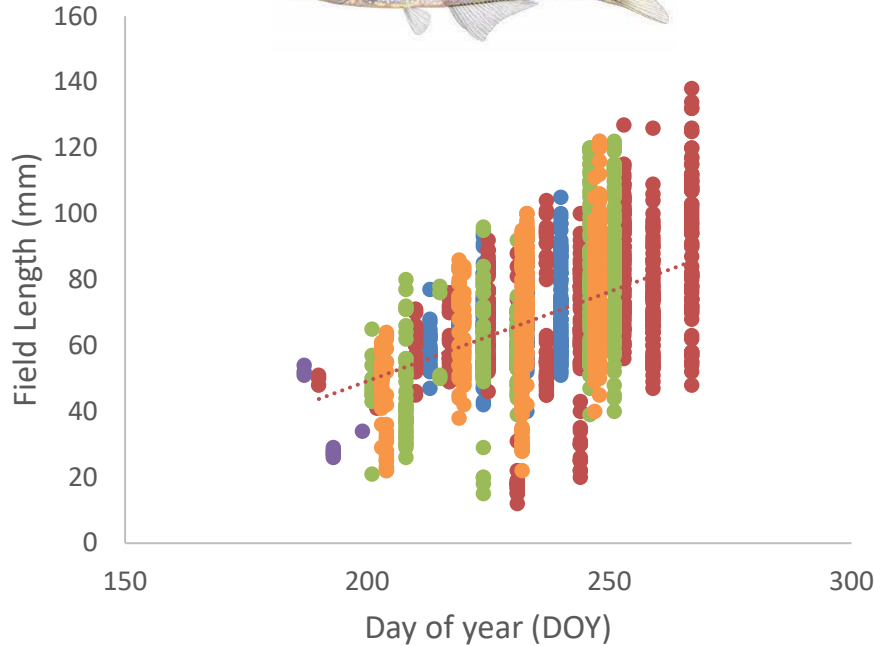


Brian Determan (GMRI REU student)

# Temperature and fish growth

Top 6 species – 9048 length measurements over 8 years

Atlantic silverside, N = 3086



Jasmine Callier, NOAA IN-FISH! student