

# Maine Dept. of Marine Resources CBEP Monitoring Network 2021 Updates

---

- *Bryant Lewis*
- *Maine Department of Marine Resources*
- *February 17, 2022*





Log out

## Maine - New Hampshire Inshore Trawl Survey Data Portal

[About](#) [Species Indices](#) [Catch at Length](#) [Species Distribution Map](#) [Maturity Data](#)

[Environmental Data](#) [Download Raw Data](#)

Filter data with the following selectors:

Species:

Alewife

Season:

Fall

Survey Year:

2020

Map Controls

Map Type

Single Survey

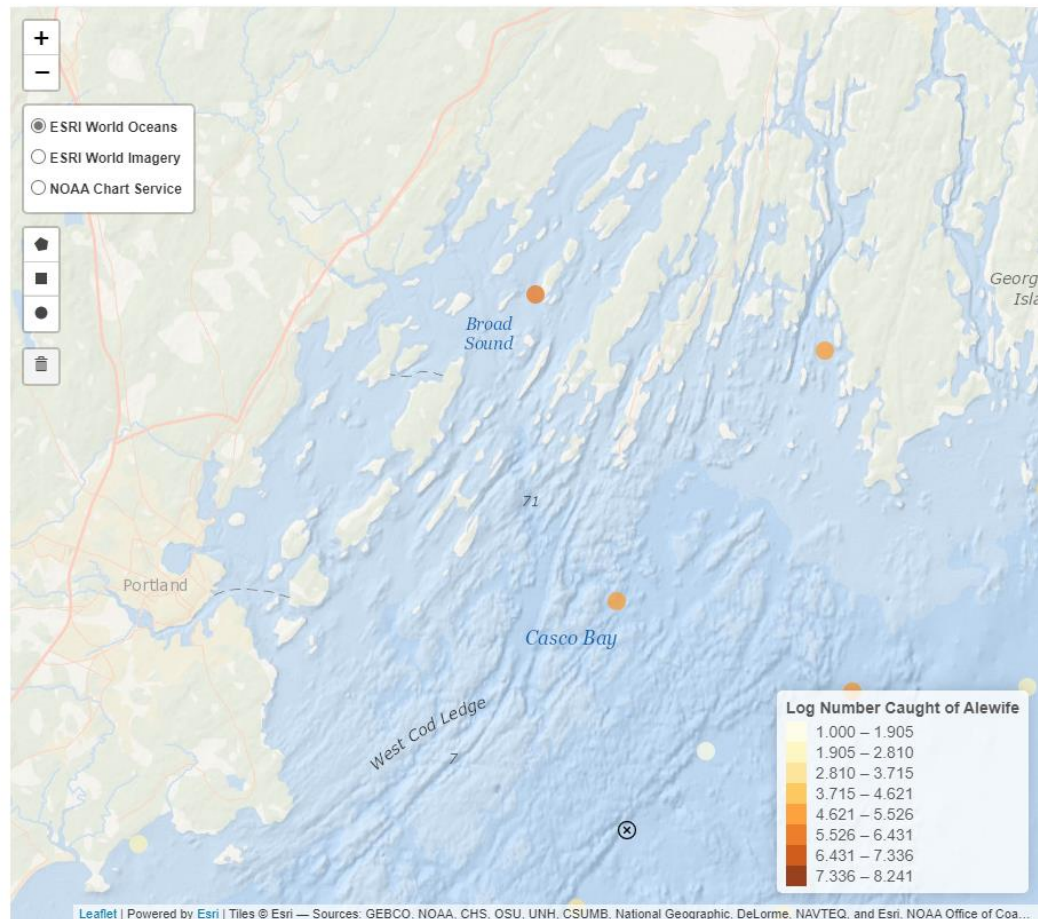
Color Scheme

YlOrBr

Map Variable

Number Caught

☒ Log Adjust Map Color Scale



# Maine/NH Inshore Trawl Survey

- Online since spring 2020
- Available to the public
- Shinyapp

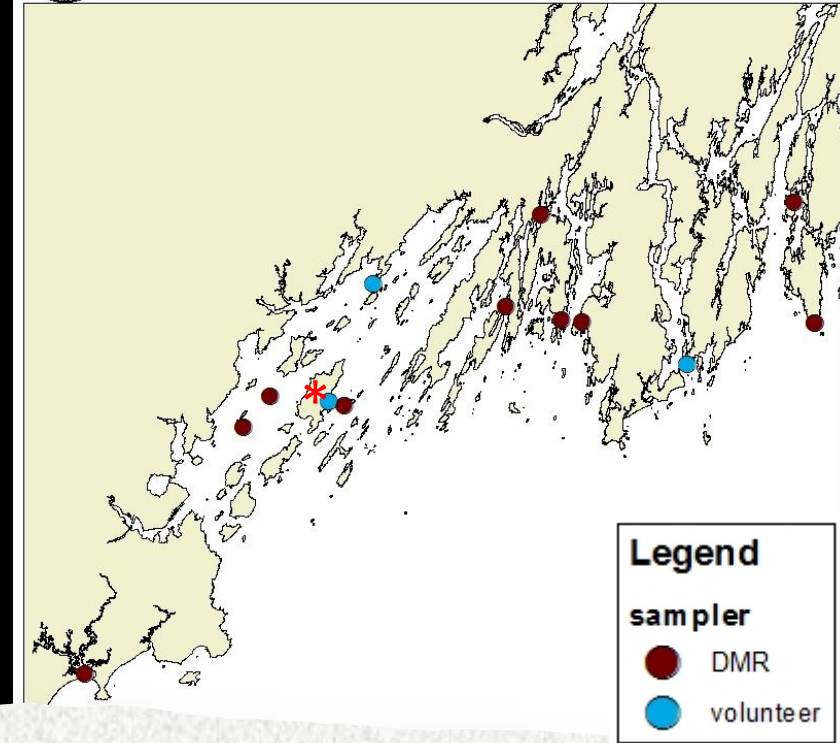
[Maine DMR MENH Inshore Trawl Survey Data Portal \(shinyapps.io\)](https://shinyapps.io/MaineDMRMENHInshoreTrawlSurveyDataPortal/)



Sebascodegan Island –  
July 2021



Long Reach, Harpswell–  
July 2021



# Phytoplankton Monitoring

- DMR stations sampled year-round
  - Monthly ~Jan-April, weekly ~May to December
- Volunteer stations weekly May-September\*
- One volunteer is still sampling in February 2202!
- 302 samples collected in 2021

- Home
- DMR Phytoplankton Data New
- Bigelow Biotoxin Forecast
- DMR Data Archive

Genus Selection

Choose the phytoplankton bloom genus:

Pseudo-nitzschia Large

Graph Site Selection

Choose the sample site nearest you to show its plot:

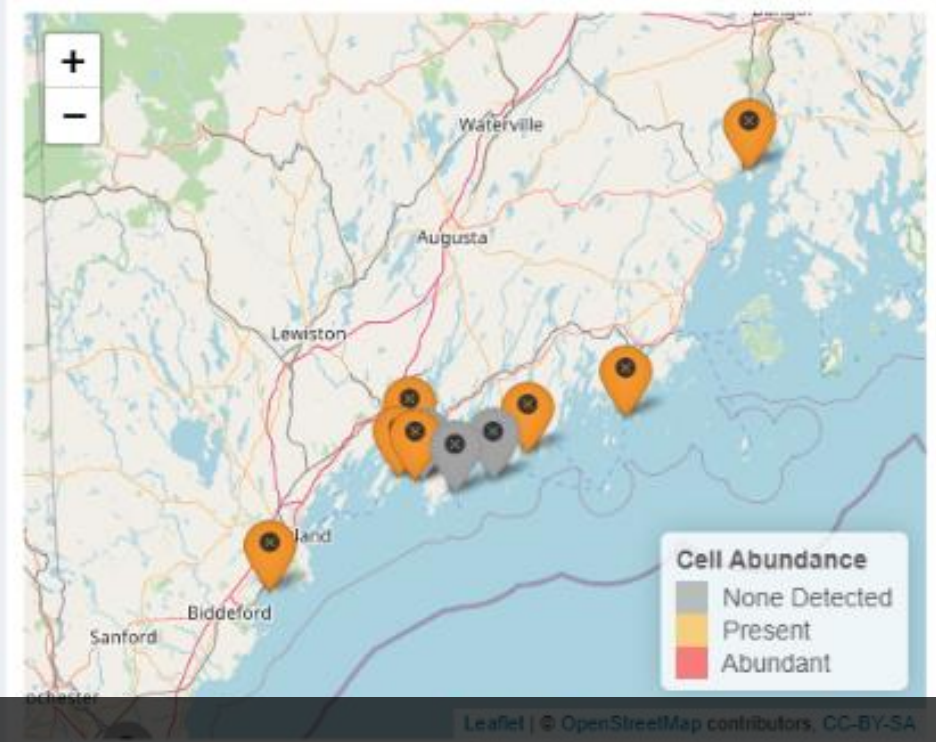
Great Cove Marina

Graph Date Selection

Date range:

2021-01-01 to 2021-11-30

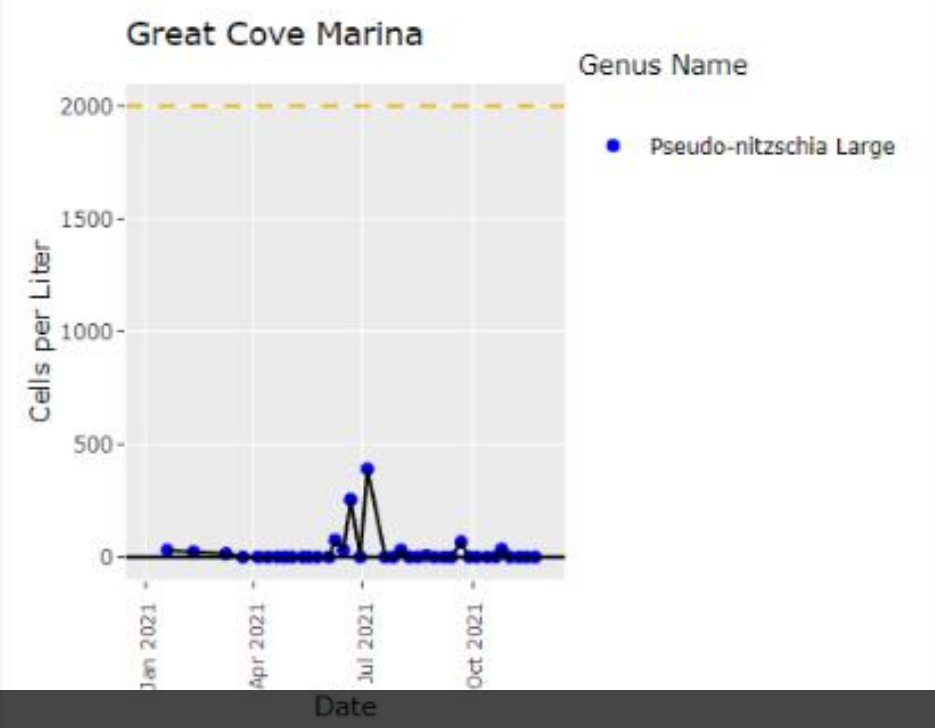
Regional Map



This map shows the most recent phytoplankton counts in cells/L at all locations monitored by DMR. Use the selectors on the left to choose your genus of interest, and click on the site markers for more information. Phytoplankton counts are not directly related to the amount of toxins found in shellfish, but they can be used as a rough guide.

Click play on the slider below to watch how the bloom progressed over the season.

Sampling Site Graph



This is a graph of current harmful algal blooms on the x-axis, and cells per liter on the y-axis. Use the selectors on the left to change the genus, site, and dates shown. The graph shows the point at which management actions such as shellfish testing, or closures occurs.

New to 2021

Current harmful algal blooms  
Downloadable phytoplankton data  
Bigelow's PSP Forecast



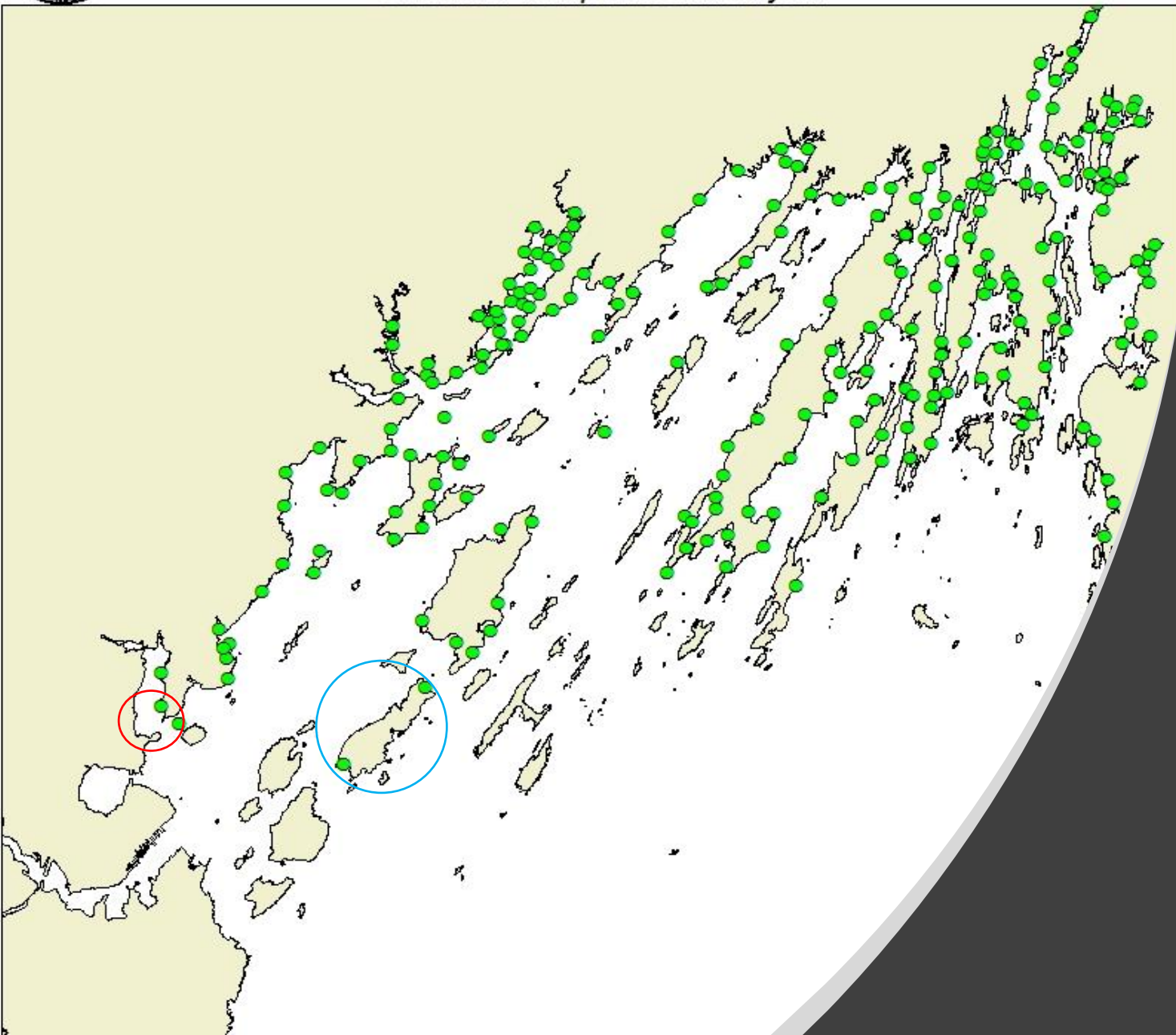


**Maine Department Marine Resources**  
**Casco Bay Water Quality Monitoring Stations**  
*245 sites sampled 6 times/year*



# Fecal Coliform Water Quality Testing

- Testing for shellfish harvesting areas
- Most stations collected by municipalities
  - Exceptions: Yarmouth, Cumberland, Chebeague and surrounding islands
- Possible shellfish depuration opening – Presumpscot River (Red Circle)
- Long Island shellfish opening being considered (Blue Circle)



# Biotoxin Shellfish Testing

- Testing for shellfish harvesting areas
- Biweekly sampling at select “hotspot” stations March to April
- Weekly sampling May to August
- Weekly sampling post-August based on if HAB-species present (*Pseudo-nitzschia*)
- *Pseudo-nitzschia* research stations sampled June to December (blue triangle)
- 403 samples collected in 2021
- **MILD BIOTOXIN SEASON**

