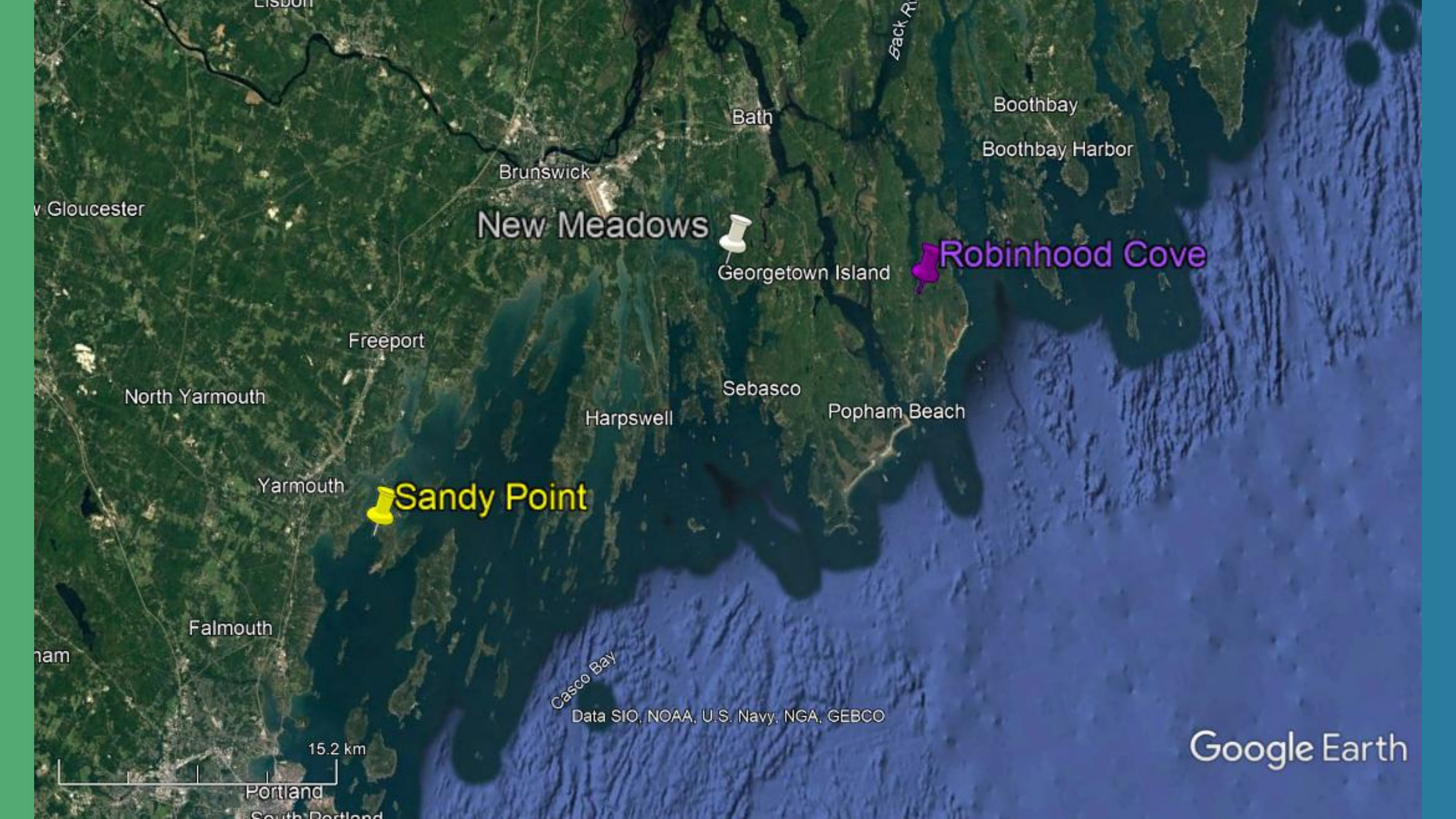




**Intertidal green crab population trends
2018-2021**



New Meadows

Robinhood Cove

Sandy Point

Data SIO, NOAA, U.S. Navy, NGA, GEBCO

Google Earth

15.2 km

Portland

South Portland

Back R

Boothbay

Boothbay Harbor

Bath

Brunswick

Georgetown Island

Sebasco

Popham Beach

Harpswell

Freeport

North Yarmouth

Yarmouth

Falmouth

Gloucester

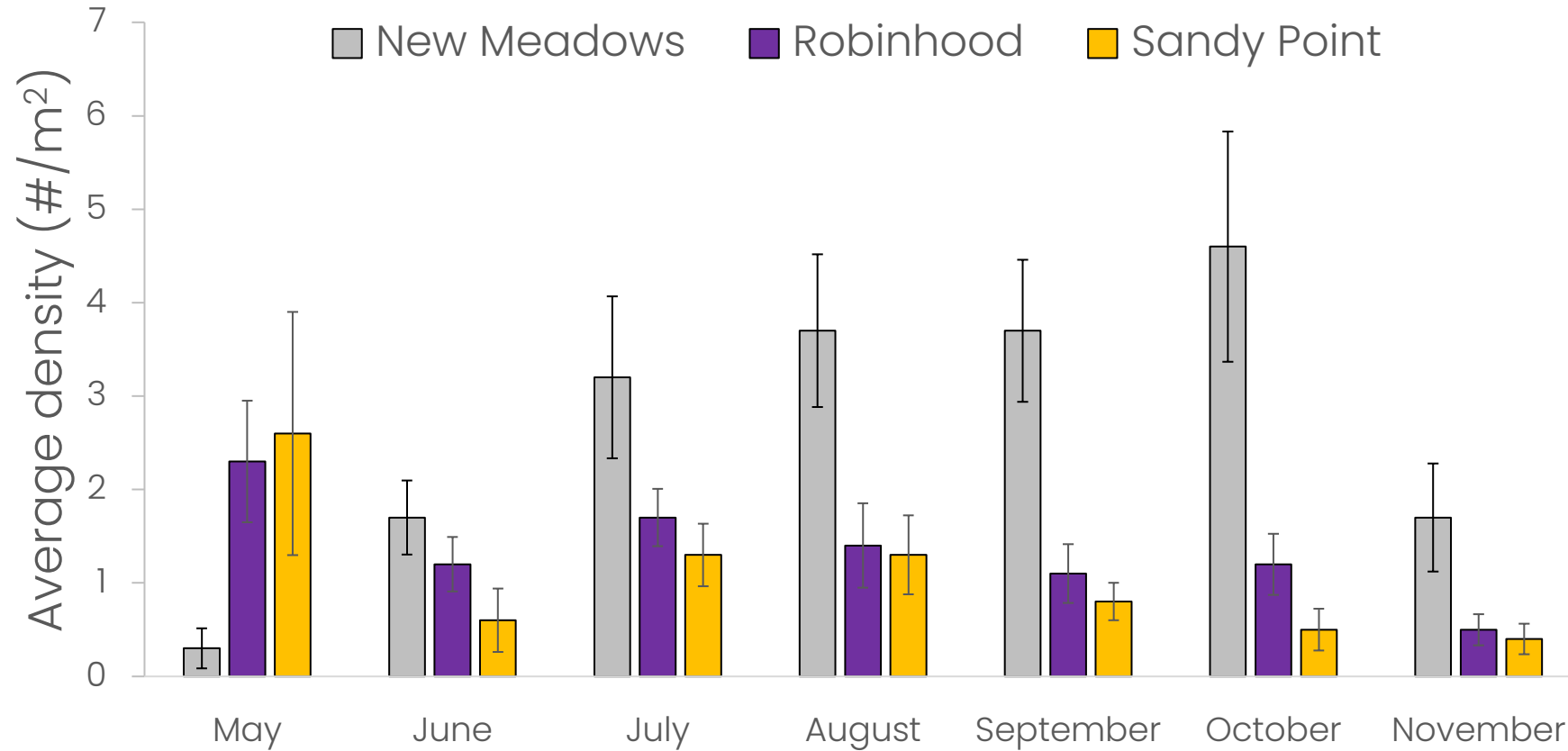
ham



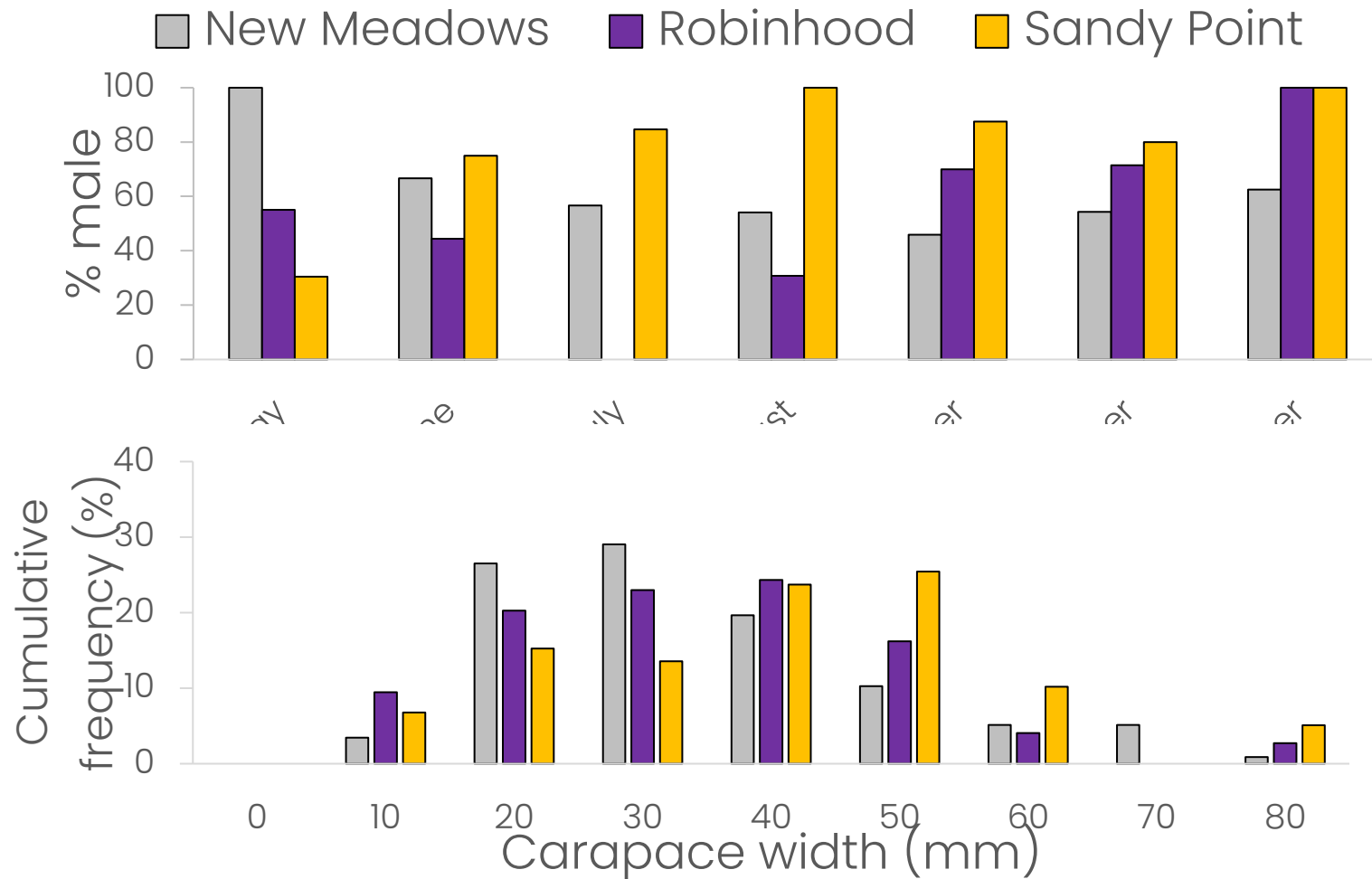
- Rocky shoreline (often adjacent to mudflats)
- Low intertidal
- Monthly sampling April/May-November



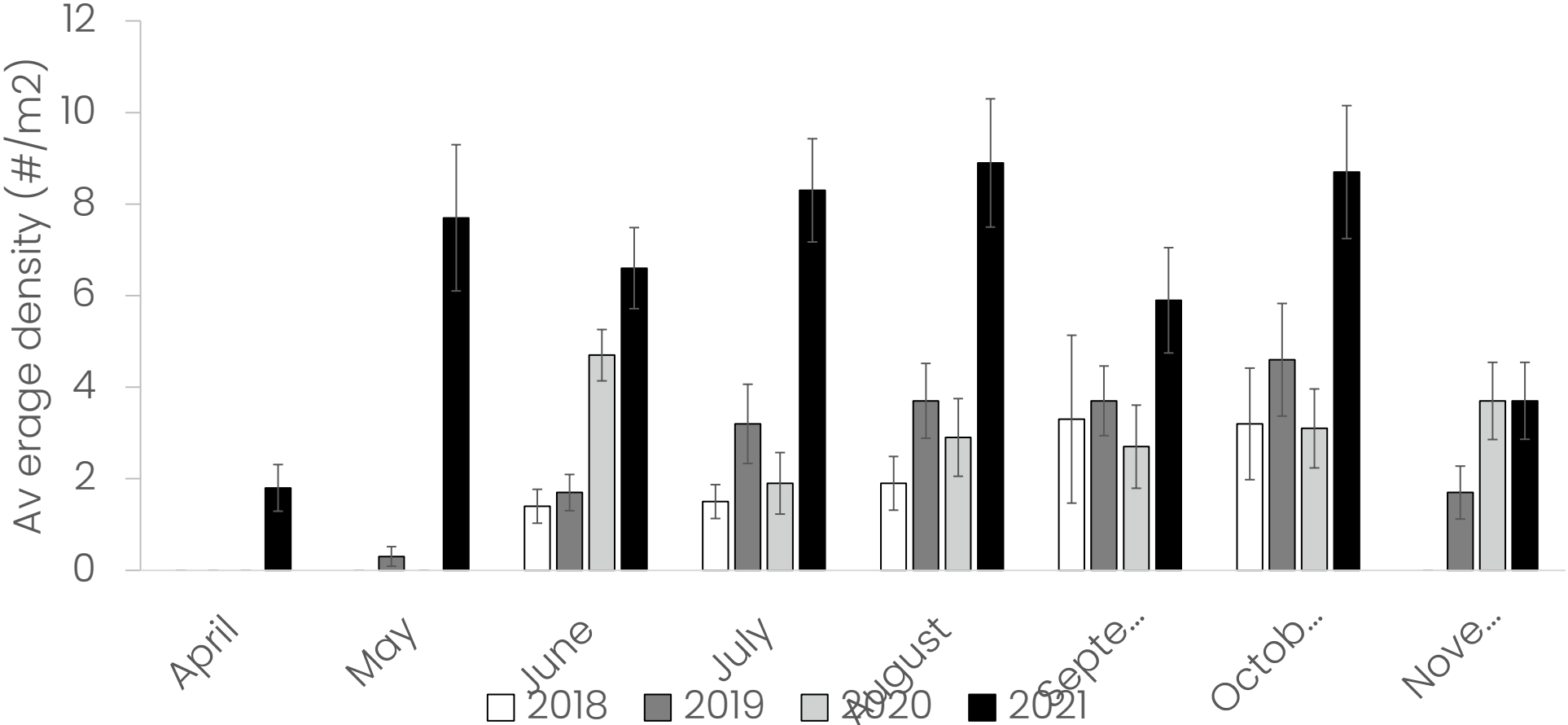
Spatial population patterns: density



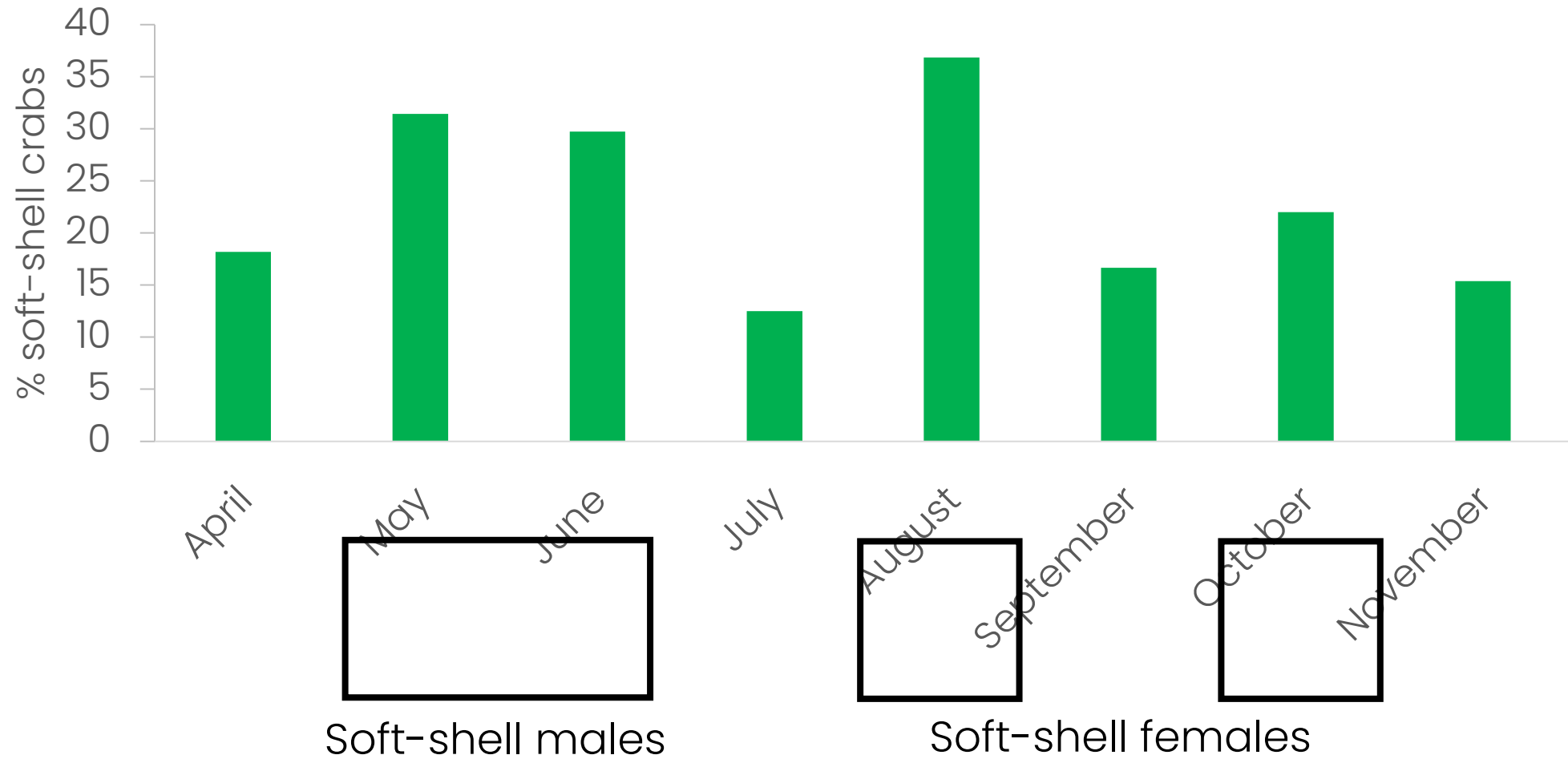
Spatial population patterns: sex and size



Seasonal trends: density



Seasonal trends: soft-shell crabs



Application

- Long term monitoring = better understanding of green crab populations
- Conservation and stock enhancement activities
- Fishery development
- Predicting future trends
- Data portal/open access

www.manomet.org

