



Marine Environmental Monitoring & Marine Vegetation Mapping Programs, 2022-2023

Angela Brewer

Section Leader, Marine Unit

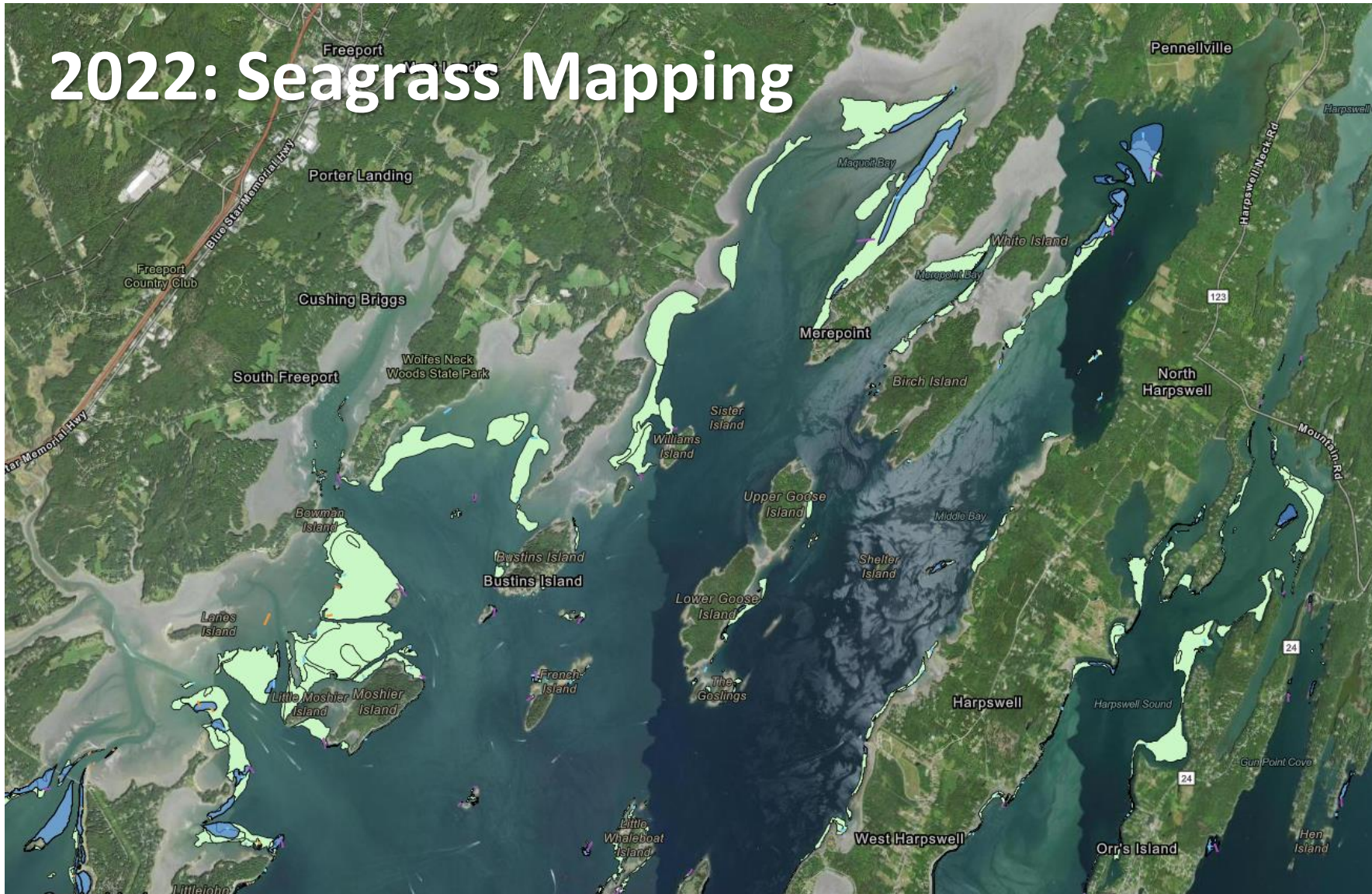
Division of Environmental Assessment

Bureau of Water Quality

MAINE DEPARTMENT OF ENVIRONMENTAL PROTECTION

Protecting Maine's Air, Land, and Water

2022: Seagrass Mapping

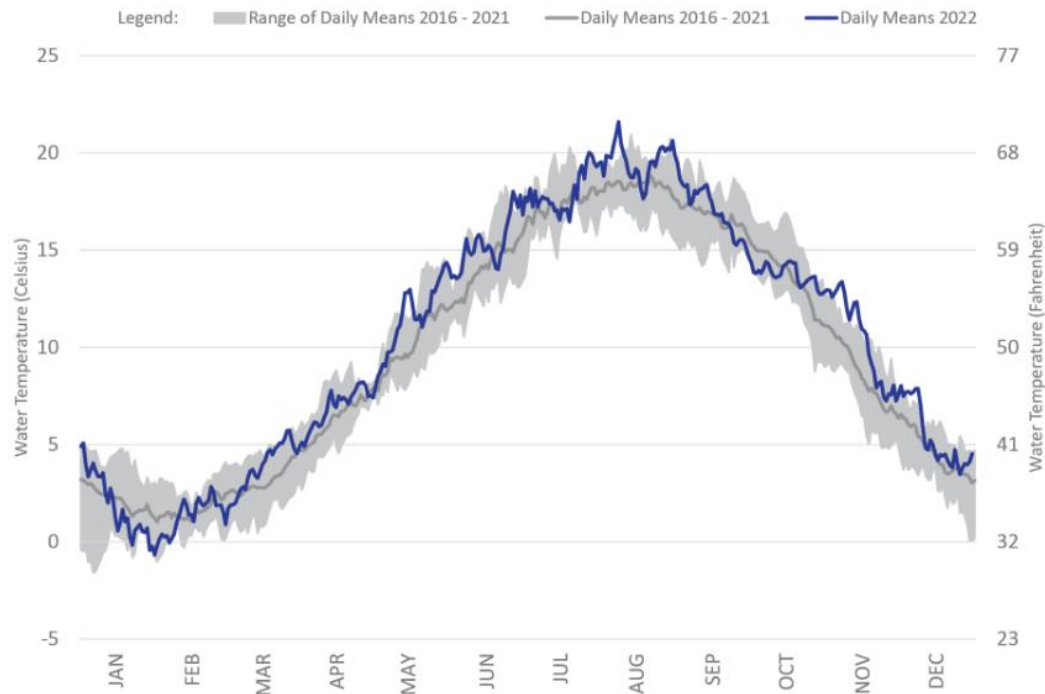


- low tide aerial survey July 26th
- 54% Casco Bay-wide areal loss since 2018
- losses mostly in northern Bay where beds most extensive & dense historically
- déjà vu of 2011-2012 losses?
- widgeongrass identified in New Meadows Lakes





Continuous Monitoring Station, Yarmouth, Maine Comparison of Daily Mean Temperatures

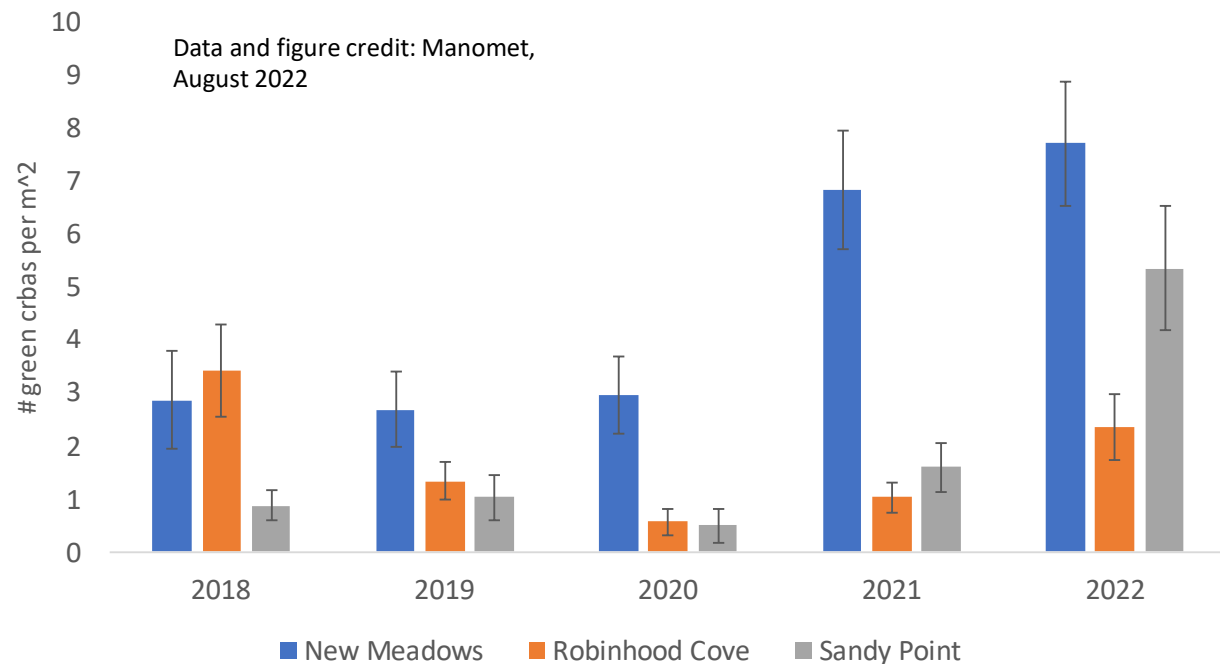


Available: [report](#), [seagrass polygon layer](#),
[low tide orthoimagery](#)



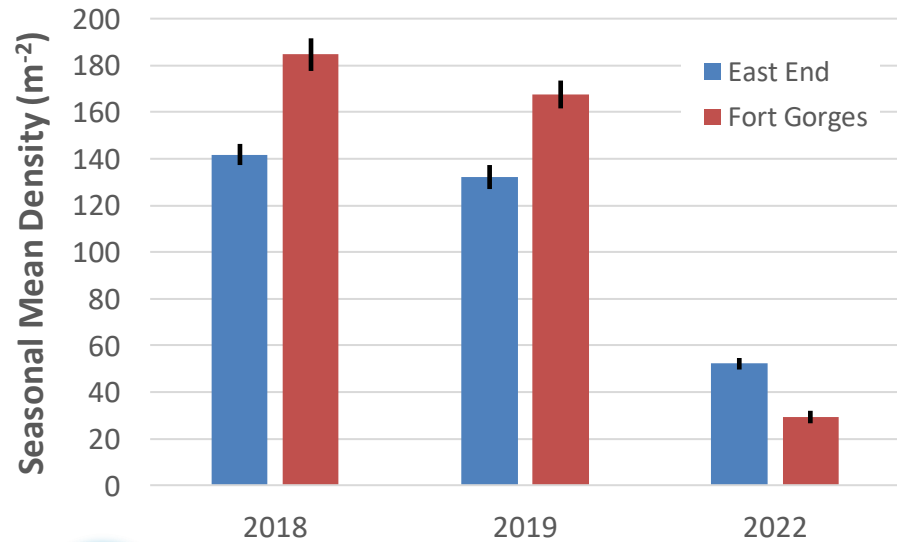
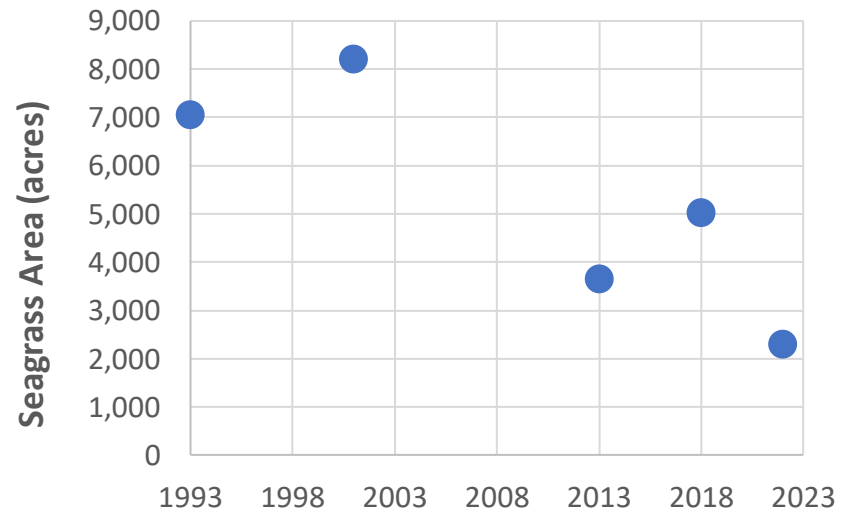
MAINE DEPARTMENT OF ENVIRONMENTAL PROTECTION

Green Crab Density 2018- 2022

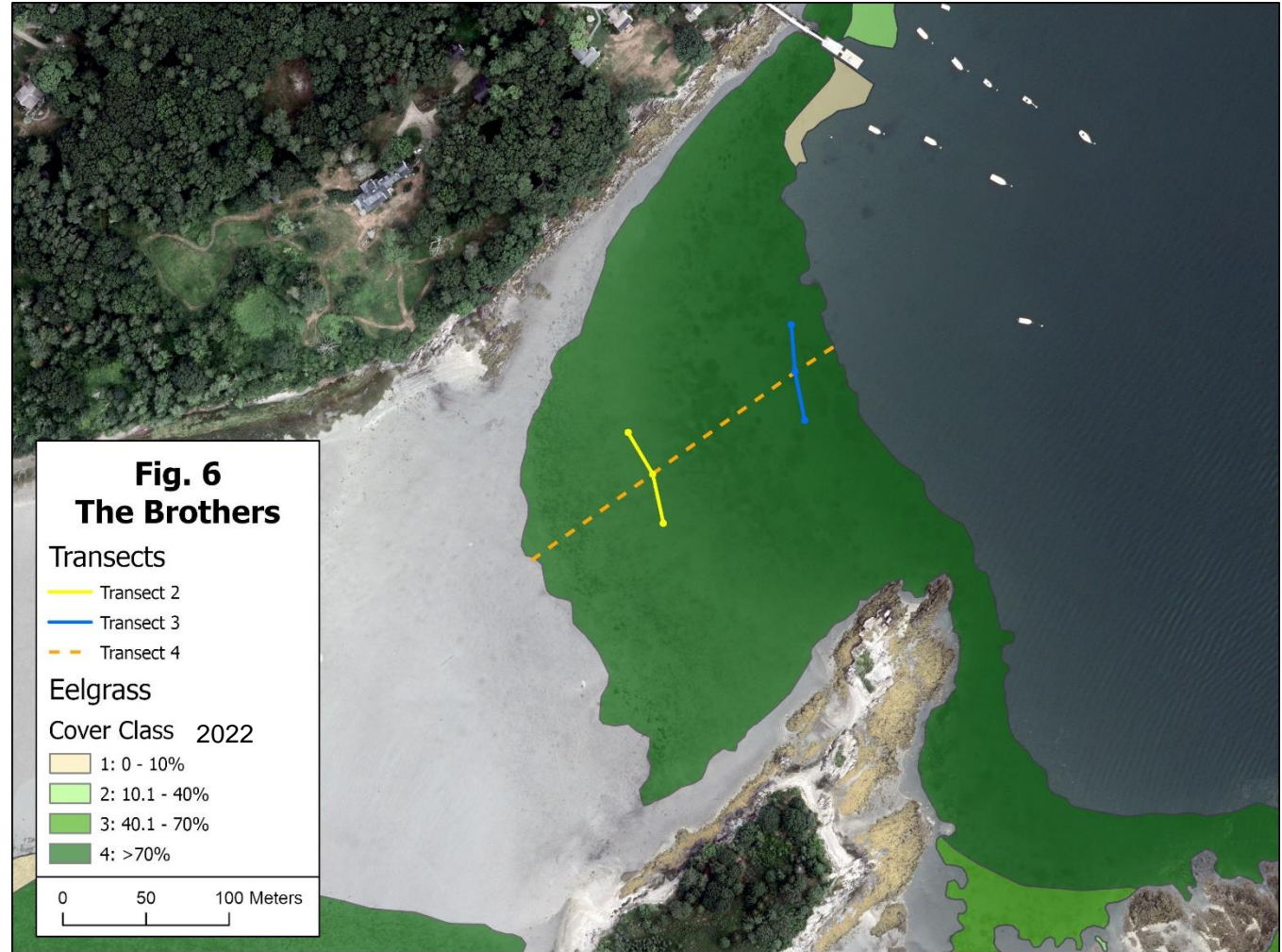


www.maine.gov/dep

Casco Bay seagrass decline ☹️☹️



- Eelgrass transect monitoring with Team Zostera, June & Sept.-new reference site at The Brothers

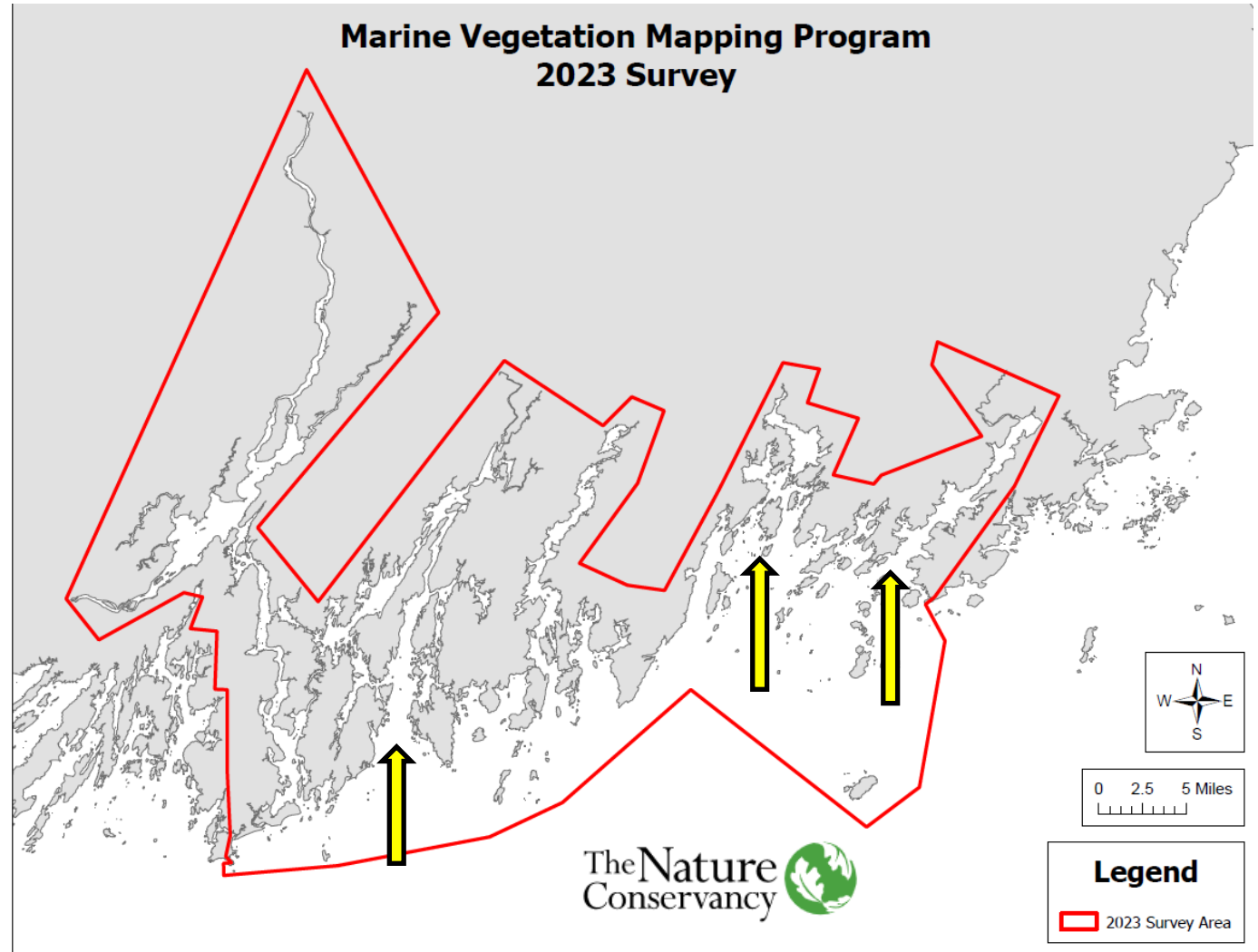


2023: Midcoast focus ☹️

- Marine Vegetation Mapping Program: new staff hired, next Casco Bay survey in 2027



- Continued baseline eelgrass transect monitoring in June, Sept.
 - Deploying continuously monitoring, wiped light sensors (3) at sites





Contact:

Angela Brewer, 207-592-2352
angela.d.brewer@maine.gov

www.maine.gov/dep

