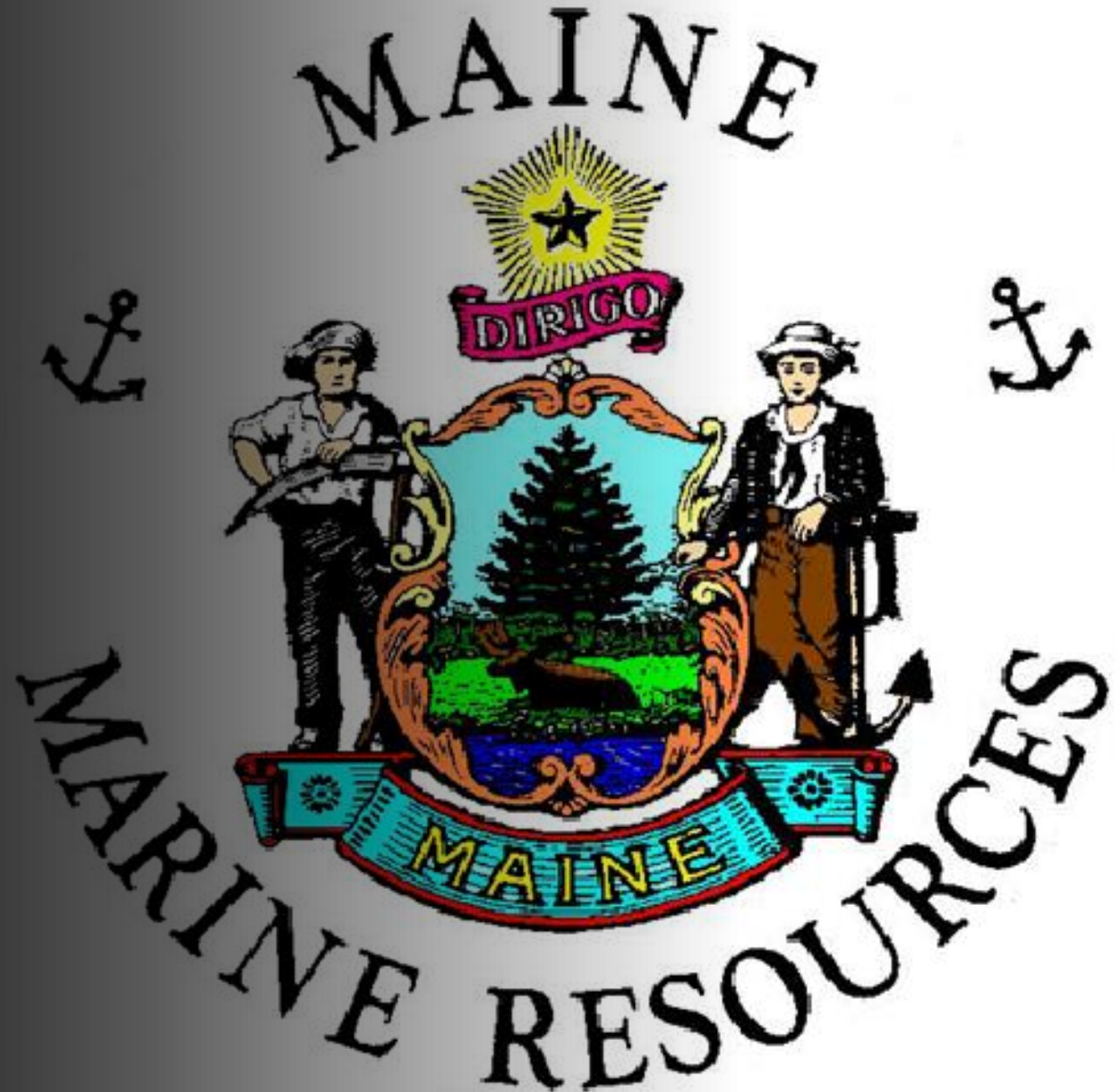
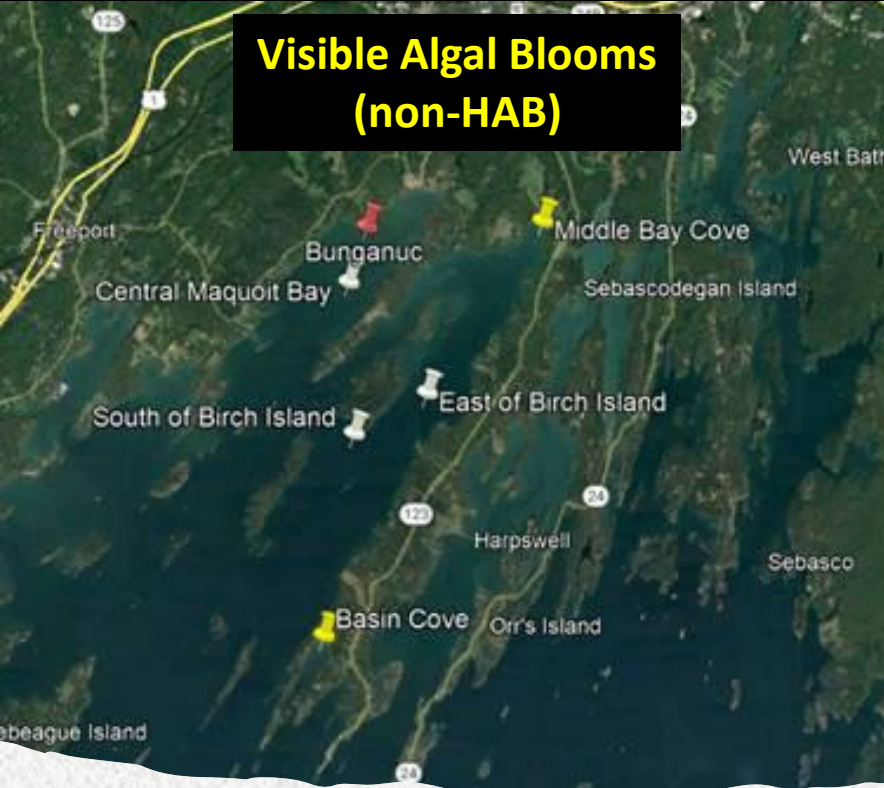


Maine Dept. of Marine Resources CBEP Monitoring Network 2022 Updates

- *Bryant Lewis*
- *Maine Department of Marine Resources*
- *May 11, 2023*



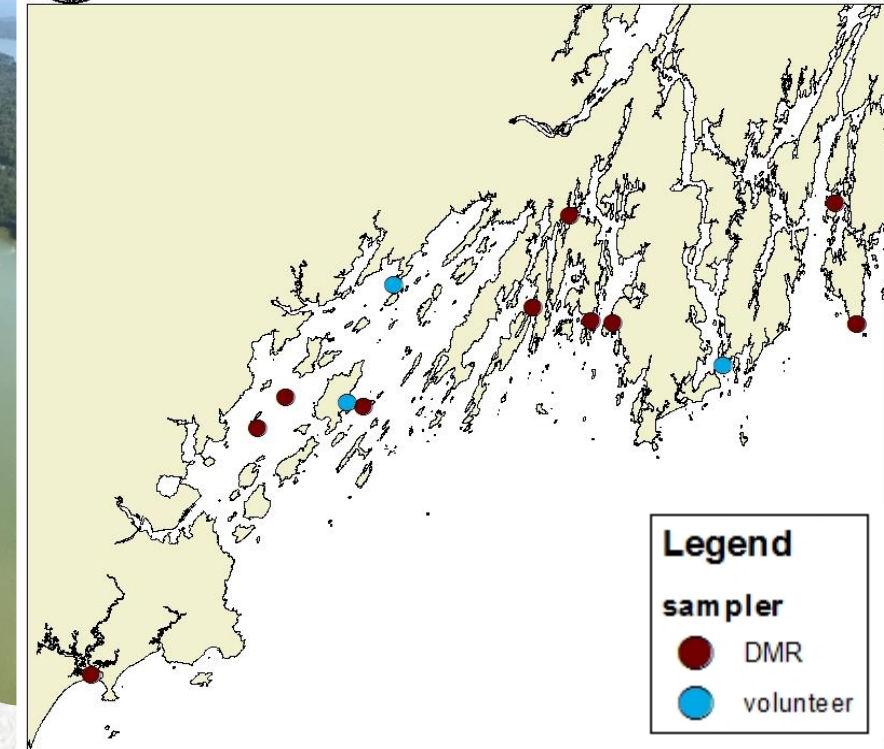
Visible Algal Blooms (non-HAB)



Middle Bay Cove



Maine Department Marine Resources
Casco Bay Phytoplankton Monitoring Stations



Phytoplankton Monitoring

- No current database for non-HAB events.
- DMR stations sampled year-round
 - Monthly ~Jan-April, weekly ~May to December
- Volunteer stations weekly May-September
- 589 HAB samples collected in 2022

Visible Algal Blooms Monitored (non-HABs)

Basin Cove



Middle Bay



Maquoit Bay



Bunganuc



Birch Island



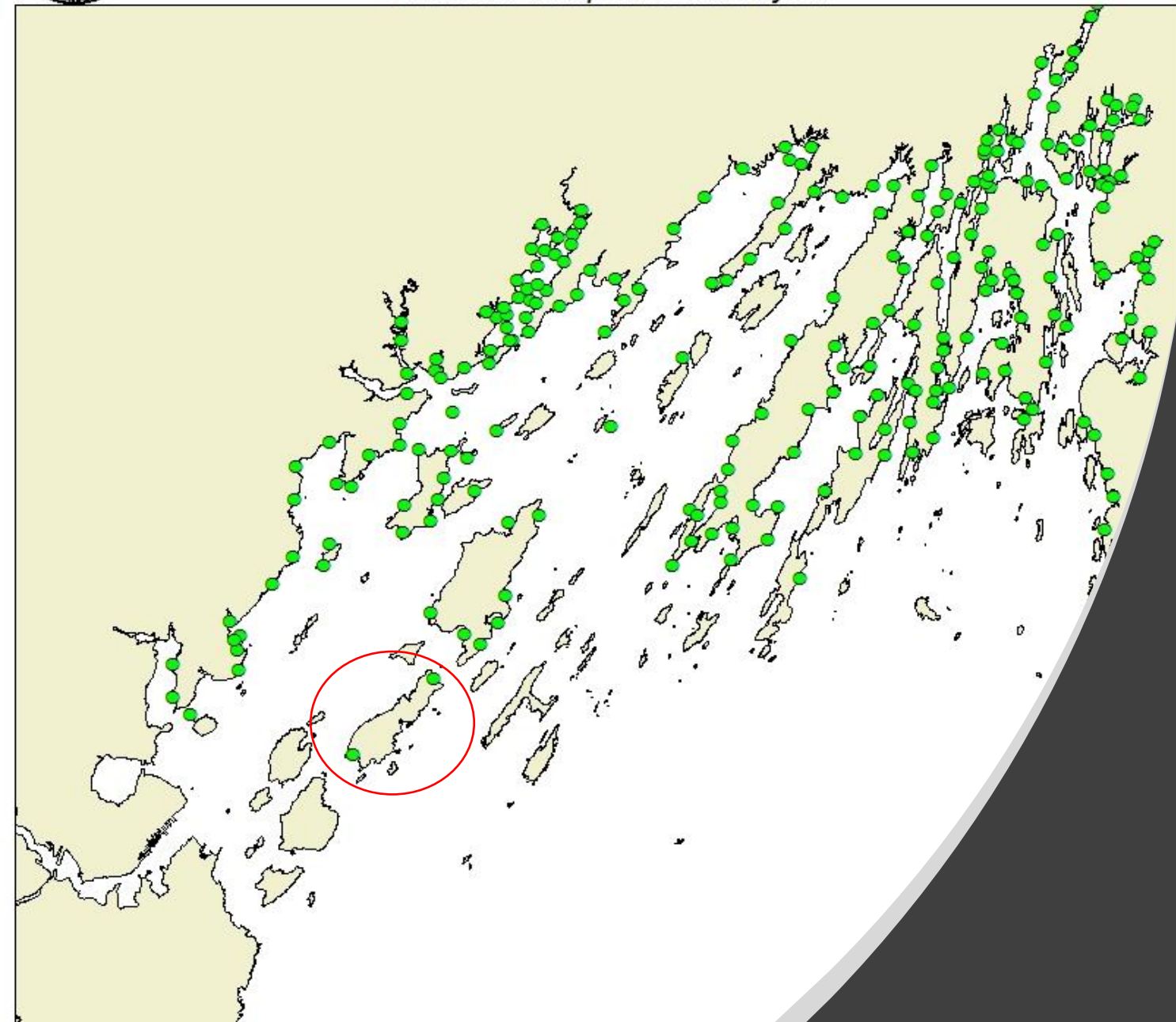


Maine Department Marine Resources
Casco Bay Water Quality Monitoring Stations
245 sites sampled 6 times/year



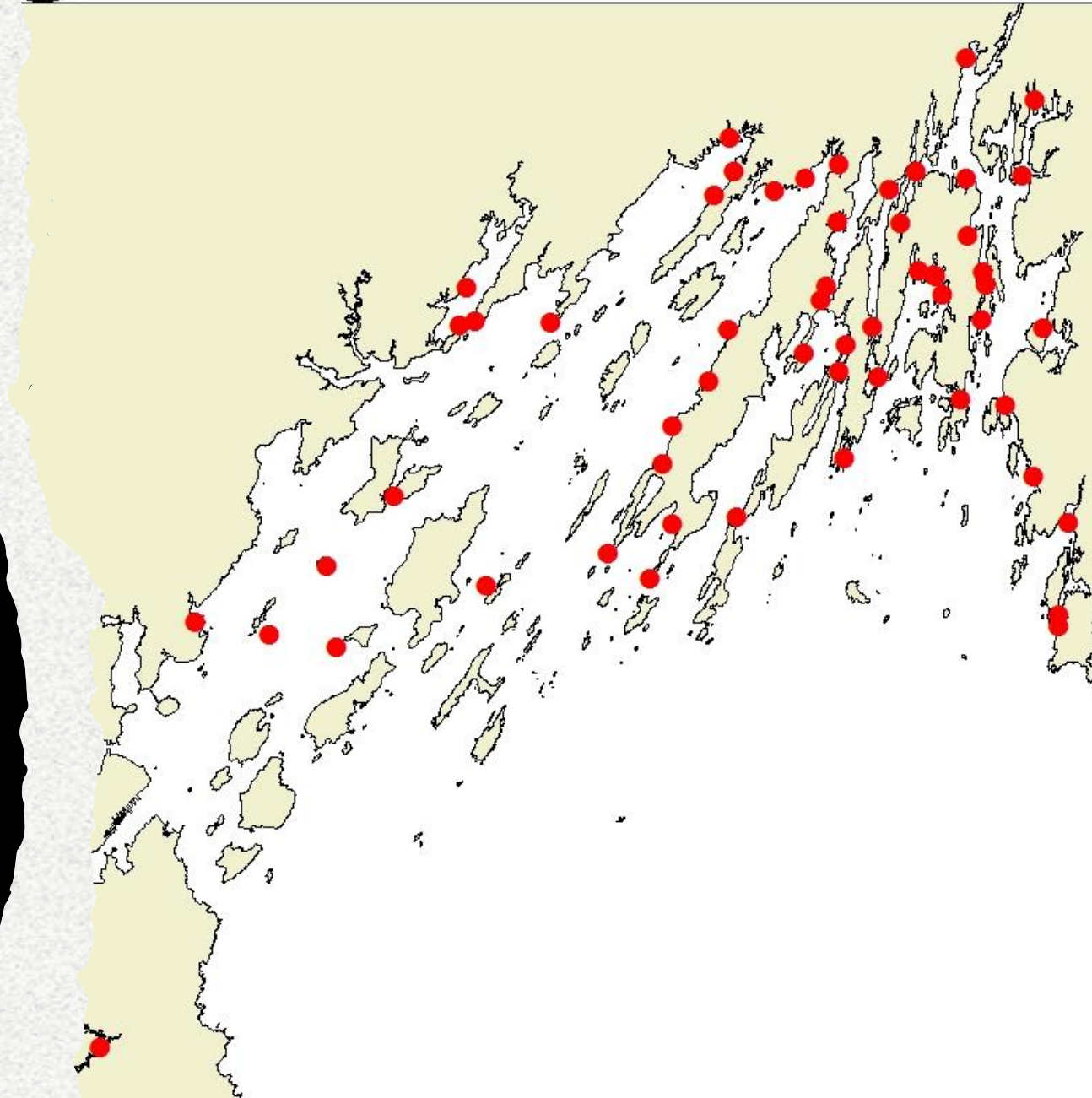
Fecal Coliform Water Quality Testing

- Testing for **shellfish** harvesting areas to identify **fecal contamination**
- Most stations collected by municipalities
 - Exceptions: Cumberland, Yarmouth, Chebeague and surrounding islands
- Long Island shellfish being assessed for a 2023 opening
- Combination of land and boat sampling

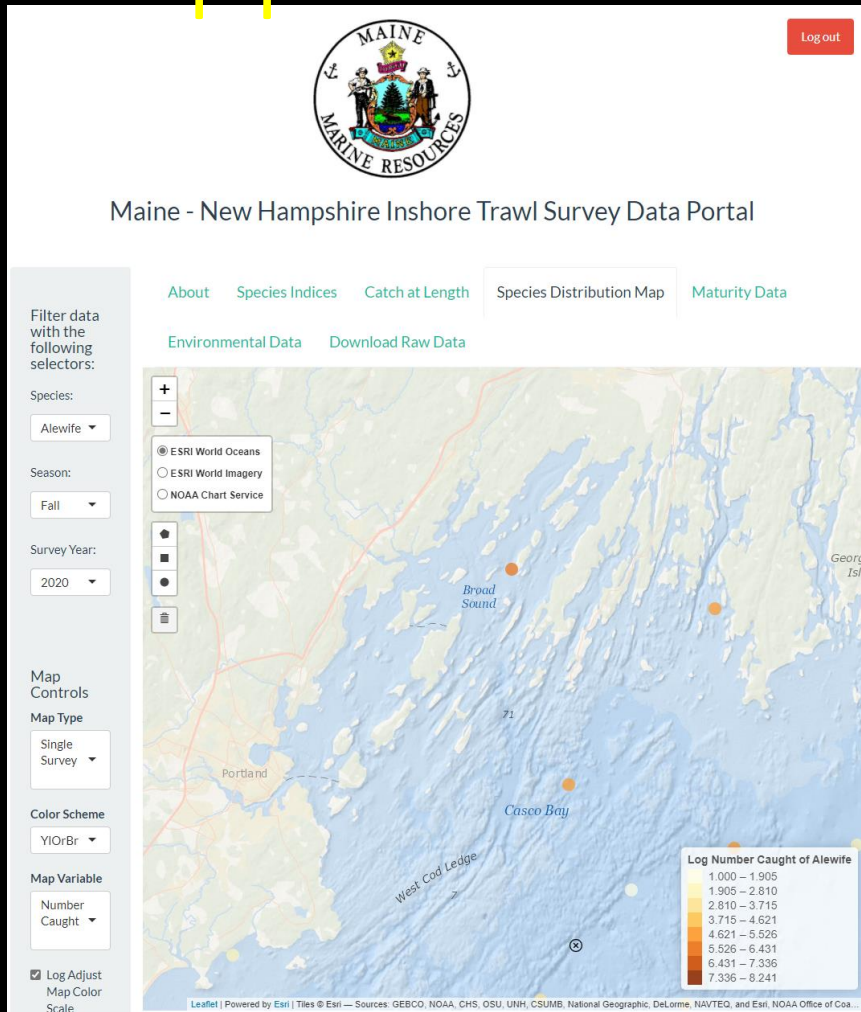


Biotoxin Shellfish Testing

- Testing for **shellfish** harvesting areas
- Biweekly sampling at select “hotspot” stations March to April
- Weekly sampling May to August
- Weekly sampling post-August based on if HAB-species present (*Pseudo-nitzschia*)
- 729 out of 859 samples collected in 2022 were **blue mussels**
- **MILD BIOTOXIN SEASON**



DMR Website Interactive Applications



Web Mapping Applications

- [10 Arc-Minute Reporting Areas](#) - Web app displaying DMR 10 Minute Reporting Areas.
- [Cobscook Bay Rockweed Management Area App](#) - Web app displaying rockweed sectors and conserved lands within the Cobscook Bay Rockweed Management Area.
- [Historical Eelgrass Coverage Viewer](#) - Displays past eelgrass surveys and change analysis.
- [Lobster Management Web App](#) - Web app displaying lobster zone lines and trawl regulations.
- [MCP - Funded Shore and Harbor Planning Grants](#) - This map shows the locations of awarded Shore and Harbor Planning Grants from FY2011 to FY2023. Additional information is also shared about the year, project title, and project outcomes. The Shore and Harbor Planning Grants are administered by the Maine Coastal Program at the Maine Department of Marine Resources.
- [Maine Scenic Landscape Assessment Web App](#) - Map of scenic inventories in Maine.
- [Public Health Web App](#) - Web app showing Maine shellfish growing areas with links to their water quality classification information and P90 scores.
- [Scallop Closures WebApp](#) - WebApp to show current scallop closures in Maine.
- [Seafood Dealer Map](#) - Opt-in map displaying seafood dealers in Maine.
- [Seaweed Harvester Reporting Sectors App](#) - Web app displaying seaweed harvester reporting sectors in Maine.
- [Spring 2023 Trawl Survey Schedule](#) - This map shows the tentative schedule for the upcoming spring 2023 MENH Inshore Trawl Survey.
- [Spring 2023 Trawl Survey Schedule](#) - This map shows the tentative schedule for the upcoming spring 2023 MENH Inshore Trawl Survey.

Dashboards and Data Viewers

- [Landings Portal](#) - An interactive application for displaying and downloading Maine landings data.
- [Maine-New Hampshire Inshore Trawl Survey Portal](#) - Viewer displaying trawl survey data and analyses, including option to download data.

Home

About

DMR Phytoplankton Data

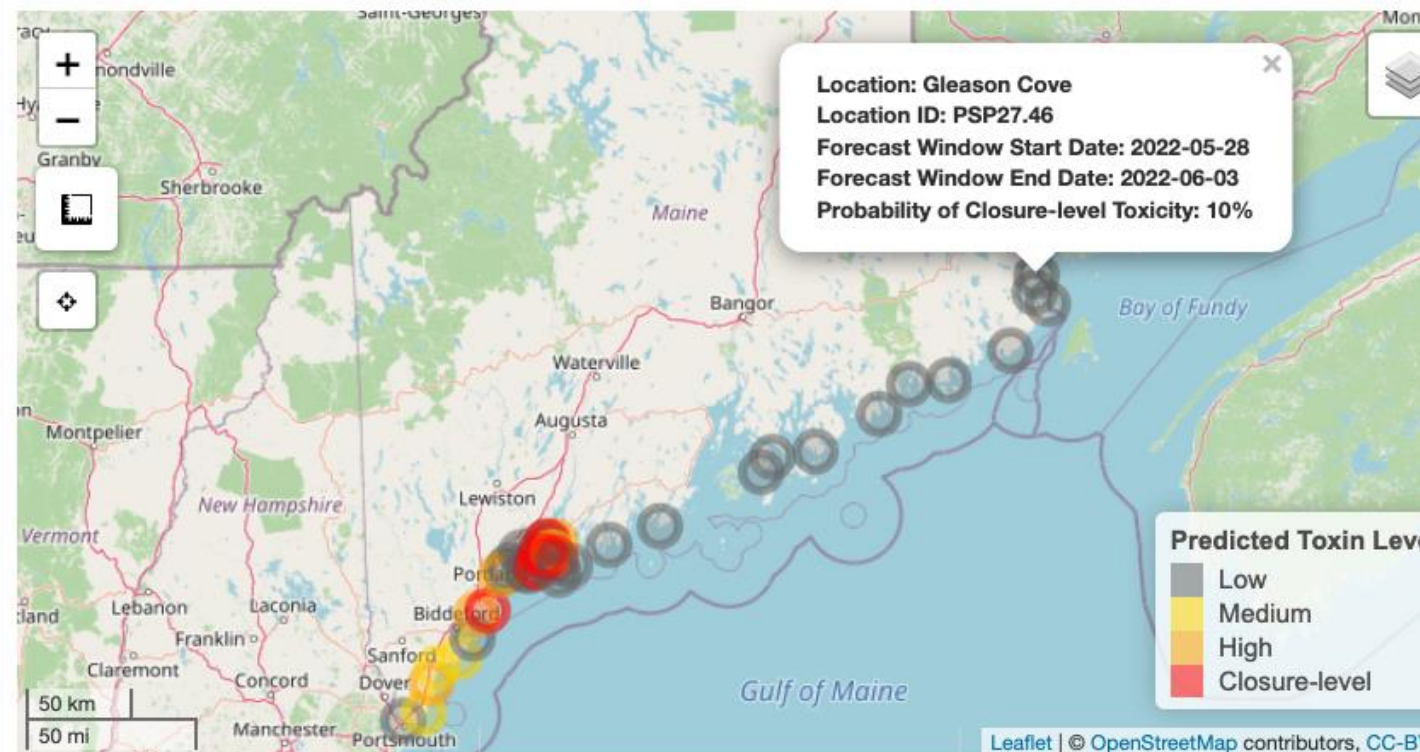
Bigelow PSP Forecast

DMR Data Archive

Publicly
Accessible –
2022 Season

Regional Map

Experimental Coastal Maine Shellfish PSP Toxicity - 10 Day Forecast



Closure Map

See the current DMR closure map at the link below.

<https://www.maine.gov/dmr/shellfish-sanitation-management/maps/index.html>

Home

DMR Phytoplankton Data

New

Bigelow Biotoxin Forecast

DMR Data Archive

Genus Selection

Choose the phytoplankton bloom
genus:

Pseudo-nitzschia Large

Graph Site Selection

Choose the sample site nearest
you to show its plot:

Great Cove Marina

Graph Date Selection

Date range:

2021-01-01

to

2021-11-30

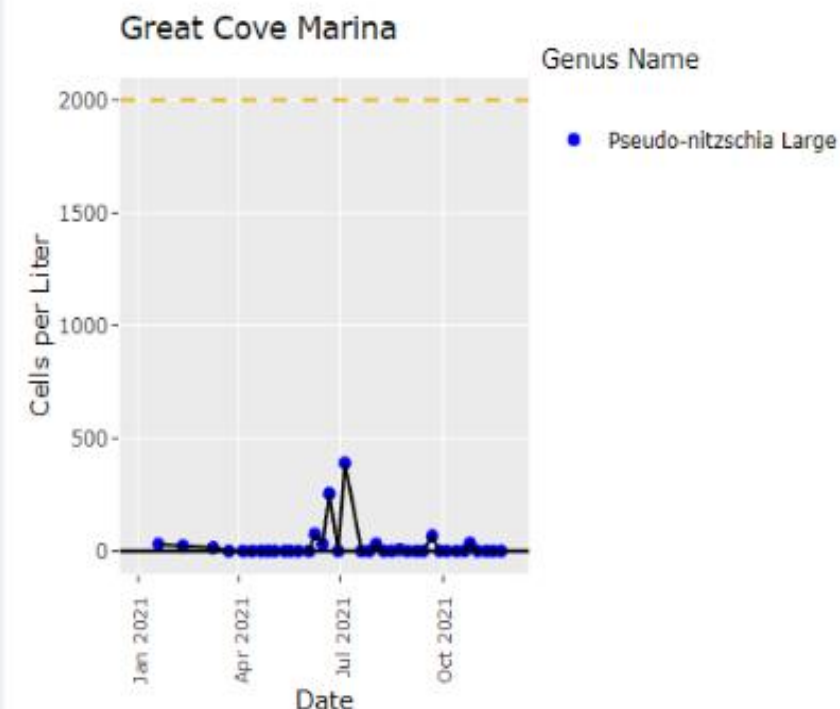
Regional Map



This map shows the most recent phytoplankton counts in cells/L at all locations monitored by DMR. Use the selectors on the left to choose your genus of interest, and click on the site marker for more information. Phytoplankton counts are not directly related to the amount of toxins found in shellfish, but they can be used as a rough guide.

Click play on the slider below to watch how the bloom progressed over the season.

Sampling Site Graph



This is a graph of phytoplankton genus at each site with dates on the x-axis, and cells per liter on the y-axis. Use the selectors on the left to change the genus, site, and dates shown. The dashed orange line is the threshold that indicates the point at which management action such as shellfish testing, or closures occurs.